



PERFORMANCE PRODUCTS
FOR HARLEY-DAVIDSON



PRODUCT NEWS

ISSUE 44 • 29 • JANUARY 2023



**FREAKMOUNT MAGNETIC
SMARTPHONE HOLDER** Billet
aluminum paired to a super-
strong, non-scratch rubber
coated magnet [Read more
inside 29-002](#)



**T&S INCEPTION SERIES FXRT
STYLE BOLT ON FAIRING KIT**
You want to bring the popular
FXR/FXRT clubstyle look to your
Milwaukee Eight Softail. We got
you covered with this Tommy
[Read more inside 29-012](#)



**ARLEN NESS SUPER STOPPER
6-PISTON BRAKE CALIPERS**
These 6-piston differential
bore brake calipers are CNC
machined from billet aluminum
[Read more inside 29-009](#)



**STAR RACING M-8 HIGH LIFT
VALVE SPRING KIT** Complete
set of PSI High Performance
High Lift Valve Springs [Read
more inside 29-007](#)



**V-STREAM WINDSCREENS FOR
PAN AMERICA** The patented
"V" shape and advanced
dimensional contours push the
wind vortex away from the [Read
more inside 29-011](#)



**WYATT GATLING BUTT
BUCKET SEATS FOR EARLY
TWIN CAM SOFTAIL** Bolt-on
solo seat [Read more inside
29-003](#)



<https://www.facebook.com/BigTwin-Motorcycles-Group>

MASK GOGGLES



NEW

Goggles with detachable strong but lightweight face mask for improved protection. Goggles have a high scratch proof lens, ventilation and an adjustable strap for a perfect fit on both your helmet and face.

780959 Mask goggles with clear lens

780960 Mask goggles with smoke lens



FUEL FRIEND FUEL CANISTERS



NEW

FuelFriend®

Don't let yourself get stranded on the side of the road with an empty fuel tank! These handy fuel canisters are available in 0.5, 1 and 2 Liter capacity. Fit easily into a saddlebag, and the smallest one will even fit a toolroll or toolbox. The 1 liter version can also be strapped against a frame or sissybar. Can also be used to store some extra oil in. UN approved for all types of fuel and oil. A lockable outlet for use with the 1 and 2 Liter canisters is seperately available.

ZODIAC CAPTAIN LARRY T-SHIRTS



NEW

Get Captain Larry on your back with one of these high quality pure cotton T-shirts. Seventies design which has the retro Zodiac logo with the Captain Larry hardtail Pan/Shovel on the back and 21st century Zodiac logo on the front. US sizes!

White
999680 Small
999681 Medium
999682 Large
999683 X-Large
999684 XX-Large

Black
999685 Small
999686 Medium
999687 Large
999688 X-Large
999689 XX-Large

ZODIAC "THE PARTS" T-SHIRT



NEW

Black 100% cotton T-shirt with white print. Regular European sizes.

999857 Small
999858 Medium
999859 Large
999860 X-Large
999861 XX-Large
999862 XXX-Large

FREAKMOUNT MAGNETIC SMARTPHONE HOLDER



NEW

FREAKMOUNT

Billet aluminum paired to a super-strong, non-scratch rubber coated magnet. The Freakmount is designed to hold at high speed without killing the looks of your bike. Holds smartphones from 2 1/2" to 4.3" (63 to 109mm) wide and up to 1/2" (12.7mm) thick.



757640 Freakmount magnetic phone holder



CONTOUR SOLO SEATS FOR SPORTSTER



NEW

Corbin Gentry style bolt-on solo seats with black Naugahyde cover and steel base plate with a black paint finish. Seats are 15 1/2" (39cm) long and 9" (23cm) wide.

789604 Fits all 1982-2003 Sportster

789605 Fits 2004-2006 and 2010 to present XL Sportster. Can also be fitted on 2007-2009 XL when the ECM is relocated

WYATT GATLING BUTT BUCKET SEATS FOR EVOLUTION SOFTAIL



NEW

Bolt-on solo seat with black Naugahyde cover and steel base plate with a black paint finish.

789606 Fits all 1984-1999 Softail

WYATT GATLING BUTT BUCKET SEATS FOR EARLY TWIN CAM SOFTAIL



NEW

Bolt-on solo seat with black Naugahyde cover and steel base plate with a black paint finish.

789607 Fits 2000-2005 FLSTC(I) Heritage Classic, 2000-2005 FLSTS(I) Heritage Springer, 2000-2003 FLSTSC(I) Heritage Classic Springer, 2000-2006 FLSTF(I) Fat Boy, 2005-2006 FLSTFSE Fat Boy CVO, 2000-2005 FXST(I) Standard, 2000-2005 FXSTB(I) Night Train, 2000-2005 FXSTS(I) Springer

WYATT GATLING BUTT BUCKET SEATS FOR LATE TWIN CAM SOFTAIL



NEW

Bolt-on solo seat with black Naugahyde cover and steel base plate with a black paint finish.

789608 Fits 2007-2017 FLSTF Fat Boy, 2010-2016 FLSTFB Fat Boy, 2016-2017 FLSTFBS Fat Boy, 2008-2011 FLSTSB Cross Bones, 2006-2015 FXST Standard, 2006-2009 FXSTB(I) Night Train, 2007-2010 FXSTC Custom, 2006 FXSTS(I) Springer

CORBIN GENTRY SMOOTHIE 2-UP SEATS FOR LATE TWIN CAM SOFTAIL



NEW

Bolt-on duo seat features a frame hugging design, black Naugahyde cover and steel base plate with a black paint finish. Seat is 13" (33cm) wide for the driver and 8 3/4" (22cm) wide for the passenger. Installation may require the separate purchase of ZPN 098010 seat bracket.

789610 Fits 2007-2017 FLSTF Fat Boy, 2010-2016 FLSTFB Fat Boy, 2016-2017 FLSTFBS Fat Boy, 2008-2011 FLSTSB Cross Bones, 2006-2015 FXST Standard, 2006-2009 FXSTB(I) Night Train, 2007-2010 FXSTC Custom, 2006 FXSTS(I) Springer

098010 Chrome rear seat mounting bracket (OEM 52467-00)

CORBIN GENTRY SMOOTHIE COBRA SEATS FOR SOFTAIL



NEW

Bolt-on duo seat features a frame hugging design, black Naugahyde cover and steel base plate with a black paint finish. Seat is 12" (33cm) wide for the driver and 7" (22cm) wide for the passenger. Installation may require the separate purchase of ZPN 098010 seat bracket.

789611 Fits all 1984-1999 Softail

789612 Fits 2007-2017 FLSTF Fat Boy, 2010-2016 FLSTFB Fat Boy, 2016-2017 FLSTFBS Fat Boy, 2008-2011 FLSTSB Cross Bones, 2006-2015 FXST Standard, 2006-2009 FXSTB(I) Night Train, 2007-2010 FXSTC Custom, 2006 FXSTS(I) Springer

098010 Chrome rear seat mounting bracket (OEM 52467-00)

WYATT-GATLING SOLO SEATS FOR TOURING



NEW

Black Naugahyde solo seats with black painted base are direct bolt-on.

789616 Fits 1996-2007 FLHT, FLHTC(I), FLHTCS, FLHTCU(I), FLHTP(I) Electra Glides, FLTCU(I) Tour Glide and FLTR(I) Road Glide

789617 Fits 1996-2007 FLHP(I), FLHR(I) & FLHRC(I) Road King

789618 Fits all 2008 to present Touring

WYATT-GATLING SOLO SEATS FOR DYNA



NEW

Black Naugahyde solo seats with black painted base are direct bolt-on.

789613 Fits 1996-2003 FXDWG(I) Dyna Wide Glide

789614 Fits 2006-2017 FXDWG(I) Dyna Wide Glide

789615 Fits 2006-2017 FXD(I), FXDB, FXDBB, FXDBC, FXDF, FXDL(I) and FXDLS

FRAME COVER FOR SOFTAIL



NEW

The stock seat keeps the ECM and wiring out of sight. When you want to mount a custom spring Solo seat this black painted steel cover does the same.

789630 Solo seat frame cover for 2000-2005 Softail

EXHAUST MOUNTING BLOCK FOR EARLY FXR



Perfect copy from the since long obsolete rubber exhaust mounting block used on 1982-1990 FXR.

789622 Rubber exhaust mounting block (OEM 65780-82)

COLONY SPRINGER HEADLIGHT MOUNT KIT



Colony

Set with the beveled washer (OEM old 0231W, new 6521) lockwasher (OEM old 0265, new 7055) and 7/16-20 UNF nut (OEM old 0134, new 7839) to mount the headlight on all 1935-1948 models with Springer front fork. All items are white plated.

780161 Colony Springer headlight mount kit

KELLERMANN i.LASH LOAD EQUALIZER FOR INDIAN SCOUT

NEW



Kellermann

The one-stop solution for the installation of LED Triple function rear turn signals on models with a CAN-Bus system. Corrects the blinking frequency of the turn signals and dash control light and prevents for DTC (Diagnostic Trouble Code) coming on. All i.LASH modules come with the connectors installed for ease of installation.

743894 Kellermann i.LASH-I3 load equalizer for 2015 Indian Scout

1960-1984 FL STYLE HEADLIGHT TRIM RING



GENUINE **2 YEARS WARRANTY**

Headlight trim ring is supplied including rubber gasket (OEM 67716-60A), retaining clips (OEM 67778-60, 67779-60, 67780-60) and screw (OEM 67718-60A). Fits 1960-1965 Panhead and 1966-1984 four-speed Shovelhead. Also stock replacement for our headlight nacelle kits ZPN 160007, 160008 and 237336.

160056 Chrome (OEM 67712-60A)

160026 Black (OEM 67712-60A)

KELLERMANN i.LASH LOAD EQUALIZERS



Kellermann

The one-stop solution for the installation of LED Triple function rear turn signals on models with a CAN-Bus system. Corrects the blinking frequency of the turn signals and dash control light and prevents for DTC (Diagnostic Trouble Code) coming on. All i.LASH modules come with the connectors installed for ease of installation.

743822 Kellermann i.LASH-HD2 load equalizer for 2018 to present Softail

743891 Kellermann i.LASH-HD3 load equalizer for 2014 to present XL Sportster

743892 Kellermann i.LASH-HD4 load equalizer for 2013-2017 Softail Breakout and Softail Slim

REPLACEMENT CAN BUS DECODER FOR CIRO LIGHTS



NEW

This CAN-Bus decoder only works with below listed Ciro lighted accessories.

Tour Blade:

ZPN 754210 (Ciro #40200)

ZPN 754211 (Ciro #40201)

Bag Blades:

ZPN 754206 (Ciro #40008)

ZPN 754207 (Ciro #40009)

Filler Panel Lights:

ZPN 754029 (Ciro #40002)

ZPN 754030 (Ciro #40003)

ZPN 754193 (Ciro #40022)

ZPN 754194 (Ciro #40023)

Snakeeyes:

ZPN 754167 (Ciro #40015)

ZPN 754168 (Ciro #40016)

ZPN 754169 (Ciro #40017)

ZPN 754170 (Ciro #40018)

754305 Ciro CAN-Bus decoder

Zodiac on tour

Motor Bike Expo 2023

Italy, Verona

January 27, 2023 - January 29, 2023

[Event Info >](#)

MP 23 MOTORCYCLE SHOW

Finland, Helsinki

February 3, 2023 - February 5, 2023

[Event Info >](#)

SALON DE 2 ROUES

France, Lyon

February 23, 2023 - February 26, 2023

[Event Info >](#)



HORN MOUNT HARDWARE KITS



NEW

Colony
Samuel
MOTORCYCLE PARTS & ACCESSORIES

Perfect copies from the OEM hardware as used on vintage 45CI and Big Twin Harley-Davidson models.

- 780191** Fits all 1942-1945 models. Contains black spring plate (OEM 69118-42), two black hex head shoulder bolts, two panhead screws, six nuts and four washers, Colony
- 780192** Fits all 1946-1948 models. Contains black spring plate (OEM 69118-42), two black hex head shoulder bolts, two panhead screws, four nuts and four washers, Colony
- 780193** Fits all 1949-1951 models. Contains black spring plate (OEM 69118-42), four black hex head shoulder bolts, two nuts and two lock washers, Colony
- 780194** Fits all 1952-1954 models. Contains black spring plate (OEM 69118-42), four black hex head shoulder bolts and two spacer bushings, Colony
- 788698** Fits all 1946-1948 models. Contains black spring plate (OEM 69118-42), two black hex head shoulder bolts, two panhead screws, four nuts, four washers and two lock washers, Samwel
- 788699** Fits all 1942-1945 Civillian models. Contains black spring plate (OEM 69118-42), two black hex head shoulder bolts, two panhead screws, six nuts and four washers, Samwel

COIL MOUNT STUD KITS



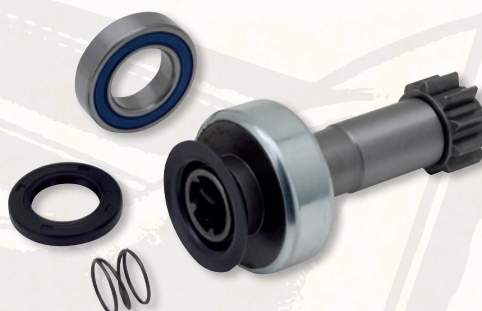
NEW

Colony

Stud kits to mount the coil mounting bracket to the frame.

- 232060** Fits 1948-1952 45CI Solo and 1948-1955 Big Twin, contains two studs (OEM 72341-56), two nuts, two washers and four lock washers, white plated, Colony
- 232066** Fits 1956-1977 Big Twin, contains two studs (OEM 72341-56), two nuts, two washers and two lock washers, zinc plated, Colony

STARTER CLUTCH FOR MILWAUKEE EIGHT



NEW

Stock replacement starter clutch fits 2017 to present Touring, 2017 to present Trike and 2018 to present Softail.

- 743786** Starter clutch, All Balls Racing

STARTER SOLENOID FOR MILWAUKEE EIGHT



NEW

Stock replacement starter solenoid clutch fits 2017 to present Touring, 2017 to present Trike and 2018 to present Softail.
743779 Starter solenoid, All Balls Racing

DRAIN PLUGS FOR HYDRA GLIDE FORKS



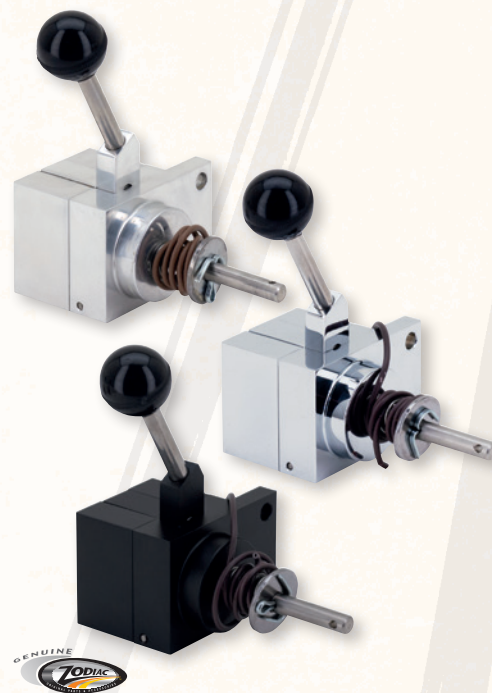
Colony

NEW

Chrome plated reproduction of the OEM socket head front fork drain plugs.

- Fits 1948-early 1977 FL Big Twin, 1958-1973 Servicar and 1958-1990 Sportster
- 758592** Chrome fork drain plugs, set of two, Colony (OEM 45830-48)

PRIMARY MOUNTED "PULL START" SYSTEM



The starting system on the 4 Speed electric start models from 1965-1988, with separate starter solenoid, is far from being "bullet-proof". In fact this starting system can be a pain in the butt. No longer, this hand operated and very efficient system will always work. This starting system mounts in the place of the starter solenoid. From now on you just get on your bike, pull the lever and go. Fits FL/FX 1965-1984, FXWG & FXST 1980-1988. Starter relay must be ordered separately.

Pull Start system

- 370252** Polished
- 370253** Chrome
- 370254** Black

Starter relays

- 231918** Accel
- 700579** Standard Motor Products
- 789619** **NEW** V-Twin Mfg.

INNER BOX FOR BATTERY BOX 45CI MODELS



NEW



Raw steel inner box fits inside the OEM battery tray on 1929-1952 45CI Solo and Servicar.

- 788697** Inner box for battery box

OPTIMATE PRO 1 DUO BATTERY CHARGER FOR PROFESSIONAL USE



Specifications:

PRO USE: 12V lead-acid STD & AGM from 3-50Ah and 12.8V/13.2V Lithium LFP (LiFePO4) from 2-20Ah.

NORMAL USE: 12V lead-acid STD & AGM from 3-240Ah and 12.8V/13.2V Lithium LFP (LiFePO4) from 2-120Ah.

CHARGING AMPS: 0.4A to 10A variable (Ampmatic)

CHARGING VOLTS: 12V lead-acid: 0.5V to 22V. 12.8V/13.2V Lithium LFP (LiFePO4): 0.5V to 14.4V. Power supply: 11V to 13.6V.

STEPS: 11

USE: Indoor rating IP40.

INPUT: Global (100-240V 50-60Hz), high efficiency.

STYLE: Case with rubber bumpers, with wall-mount or hanger bars. AC Class 2 input socket, with ON/OFF switch, 15cm/6" output cord.

INCLUDED CABLES: Class II AC cord suitable for region, 0-43 charge lead extender 180cm/72" and 0-14 fused battery clips.

INCLUDED HARDWARE: Wall storage receiver and bar hanging hook.

WARRANTY: 2-year limited repair/replacement warranty.

760370 Optimate Pro 1 Duo professional battery charger

This 12Volt 10 Amp battery charger can also be used as a battery tester, as well as a constant power supply. So great when using diagnostic software, even when the bike is running. This charger works with all kinds of lead-acid and Lithium batteries

and an input of 100-240 Volts at 50-60 Hz and has selectable output. Charger has a built-in IEC C8 connector and is supplied with a power cord with a standard continental plug. Mating C7 to other style plug power cords can be purchased locally.

STAR RACING CAMSHAFTS FOR MILWAUKEE EIGHT



Anyone who has ever heard of the brand name Star Racing knows that it is synonym to Horsepower. Star Racing founder George Bryce is one of the "G's" in G-Squared Motorsports, the world championship winning cooperation between Star Racing and S&S Cycle Inc.. They have taken the most power out of any petrol burning Harley-Davidson and reached 200MPH in just 6 seconds. Now all of George his knowledge is available in these Star Racing cams that literally push all boundaries when it comes to usable horsepower. Apart from horsepower and torque these cams even let your Milwaukee Eight sound like a Harley should sound.

30/30 Milwaukee Eight Cam .485" lift

- **Biggest Cam for stock M8**
- **1700 to 5500 RPM Range**
- **.485" Lift, Intake Closes at 25 ABDC**
- **Good with Stock Springs**
- **Sounds Like a Harley, has that lope!**
- **Unique combination of torque (intake lobe) and mid-range (exhaust lobe)**

777100 Star Racing 30/30 cam for 2017 to present Milwaukee Eight

F35A Milwaukee Eight Cam .572" lift

- **New design with high lift and short duration**
- **Performs like the famous 30/30 but has .087" more lift**
- **2300 to 6500 RPM Range**
- **.572" Lift, Intake Closes at 35 ABDC**
- **Must use Star Racing High Performance springs ZPN 777106**
- **Biggest, most powerful camshaft that fits stock engines**
- **Really pulls hard from 2500 RPM up**
- **Traps more air than any camshafts that fits a stock engine**

777107 Star Racing F35A cam for 2017 to present Milwaukee Eight

3/4 Race Milwaukee Eight Cam .585" Lift

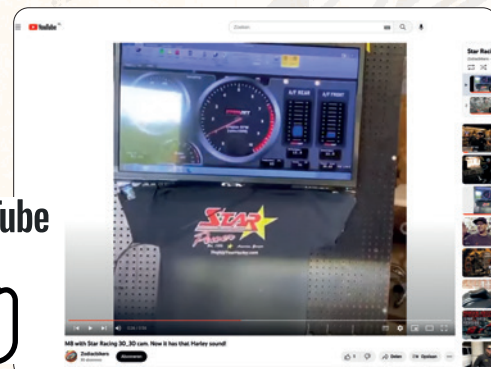
- **Best Seller - Most Lift for Reliable Performance**
- **2300 to 6500 RPM Range**
- **.585 Lift, Intake Closes at 42 ABDC**
- **Must Use Star Racing High Performance springs ZPN 777106**
- **Great for 124CI though 133CI Big Bore Kits**
- **Really Pulls Hard From 2500 up**
- **Unique combination of low to midrange (intake lobe) and top end (exhaust lobe)**

777101 Star Racing 3/4 cam for 2017 to present Milwaukee Eight

Full Race M8 Cam .615

- **Most Powerful - Designed for Maximum Performance**
- **3000 to 7000 RPM Range**
- **.615" Lift, Intake Closes at 52 ABDC**
- **Must Use Star Racing High Performance springs ZPN 777106**
- **Made for Big Engines 133-150CI or High Revving 124-133CI's**
- **Sounds Like a Racing Cam**
- **Experienced installer needs to check spring capabilities, coil bind, installed heights, piston to valve clearances, etc.**

777102 Star Racing Full Race cam for 2017 to present Milwaukee Eight



STAR RACING M-8 HIGH LIFT VALVE SPRING KIT

NEW



YouTube



Complete set of PSI High Performance High Lift Valve Springs for up to .640" Lift, JHE Titanium Retainers, Trend Billet Steel Triple Groove Locks and Lower Collars with Valve Seals. Works with any cam and all triple groove valves. Fits all 2017 to present Milwaukee Eight.

777106 Star Racing High Lift valve spring kit

INNER PRIMARY FOR 1971-1984 FX



NEW

This polished inner primary cover has the hole for the mid shift control lever as OEM. It features a 9-hole pattern for the outer cover to bolt to. If your outer cover only has 8 holes the 9th simply isn't used. The casted-in reinforced webbing makes this inner primary very strong. Note that the polishing is not up to the Zodiac standards and it is therefore recommended to have the cover painted or powdercoated.

749872 Inner primary, 1971-1984 FX & FXE, V-Twin Mfg. (OEM 60441-82A)

STAR RACING HEAVY DUTY BILLET STEEL COMPENSATOR RAMP

NEW



The compensator on your Milwaukee Eight crankshaft is a very important "shock absorber" for your flywheel assembly, primary chain, primary chain adjuster, clutch basket and the transmission. The low speed, idle and part throttle abuse is brutal without a good, effective compensator. This compensator ramp is made from a superior quality billet steel to replace the prone to failure cast steel OEM ramp. It will save expensive driveline parts thus save you money.

Fits 2017 to present Touring, 2017 to present Trike and 2018 to present Softail
777108 Star Racing compensator ramp

ARLEN NESS VENTILATOR PERFORMANCE AIR FILTER ELEMENT

NEW



This Big Sucker washable cotton gauze air filter element is higher than the standard one found in Screamin' Eagle Ventilator air cleaners for Milwaukee Eight models. This filter provides 22% more filter area surface which can give you up to 5 HP power increase. Comes complete with spacers and other hardware for a quick and easy installation.

Fits Screamin' Eagle "Ventilator" equipped 2017 to present Touring, 2017 to present Trike and 2018 to present Softail

A600099 Arlen Ness Big Sucker air filter element

INNER PRIMARY COVER FOR 1990-1993 FXR



NEW

Sand cast inner primary cover fits all 1990-1993 FXR. Can also be used to replace the OEM 60662-89 inner primary on 1989 FXR. Bearings, retaining rings, gaskets, seals and hardware must be ordered separately.

789600 Inner primary cover (OEM 60662-90)

Accessories

231143 Primary & inspection cover gasket kit, James

700288 Primary & inspection cover gasket kit, Athena

741852 Kit with all inner primary bolts and tab washers, Genuine Zodiac

742359 Kit with chrome allen head outer primary and inspection cover screws, Colony

743756 Kit with all inner primary bearings, seals and snap rings, All Balls

748898 Primary & inspection cover gasket kit, Cometic

COLONY PRIMARY COVER SCREW KITS



NEW

Colony

Complete kit with all 13 chrome socket head screws for the primary cover and 5 chrome button head screws for the derby cover.

743469 Fits 2007-2016 Touring, 2007-2016 Trike, 2008-2011 FXCW & FXCWC Rocker and 2014-2017 FXSB Breakout

REAR WHEEL BEARINGS FOR 1996-2002 BUELL



789491

234754

NEW

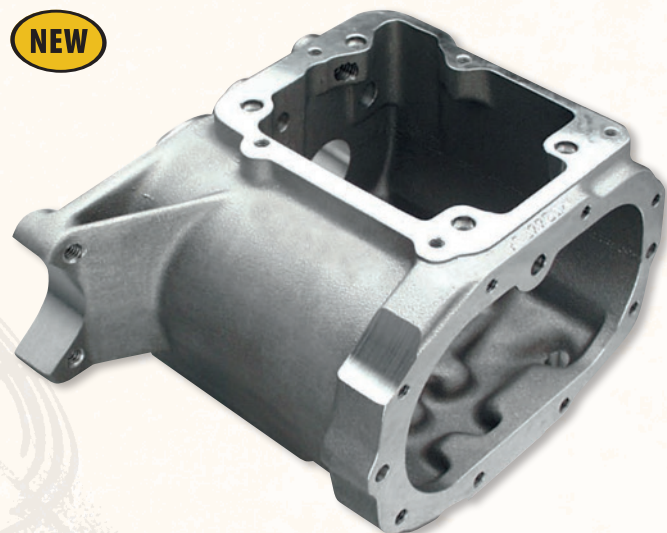
Stock replacement wheel bearings for 1996-2002 Buell M2, S1, S2 and X1 are sealed on both sides.

234754 SKF right side wheel bearing, two required (OEM E6205)

789491 SKF left side wheel bearing (OEM E62205)

JIMS 5-SPEED TRANSMISSION CASES FOR 4-SPEED BIG TWINS

NEW



These cases are manufactured from 356-T6 and machined with state-of-the-art CNC equipment. This 4 to 5-speed case is designed for 4-speed Big Twin style frames with 1970-1984 Shovelhead style drivelines and chain final drives. These cases also accept most OEM and aftermarket 5-speed bearings, seals and other parts designed for 1985-1989 Big Twin style 5-speed transmissions. OEM trap door will require minor modification to fit this case. All modifications are thoroughly explained in the accompanied instructions. The Jims 4 to 5 speed transmission case is not compatible with the factory H-D primary belt drive as used on 1980-1983 FXSB Sturgis models. For applications that utilize an existing 4-speed drive line, a 1980 to early 1984 5-speed style chain-drive main shaft and 1980 to early 1984 style main drive gear must be used. These parts are compatible with the OEM tapered inner diameter clutch hub as used on 4-speed Big-Twins. Basic case assemblies include the transmission case plus the shift lever adjustment screw, shifter shaft guide, and all studs and dowel pins required for assembly. To help insure a simple, trouble free installation, the studs and dowel pins are installed

at Jims prior to shipment. The special, non-stock counter shaft bearing, inner primary bearing and mainshaft adapter spacer are not included, but must be ordered separately.

753709 Basic case assembly, fits 1970-1989 Big Twin

Special parts required to build 5-into-4 transmission
022358 Oil seal, inner primary (OEM 12018)

144731 Shift lever adjustment screw (OEM 33119-79B)

234941 Mainshaft bearing adapter bushing, S&S (Jims #8051, S&S 56-1068)

234942 Inner primary bearing, S&S (Jims #8050 S&S 56-5100)

234943 Inner primary bearing, All Balls (Jims #8050 S&S 56-5100)

234944 Adjuster screw jam nut

720139 Shifter shaft guide bushing (OEM 33114-79)

720156 Transmission sprocket spacer, must be made to required width

750628 Counter shaft bearing, S&S (Jims #8048, S&S 56-3034)

RICKS FRONT PULLEY COVER FOR SPORTSTER S



NEW



RICK'S
MOTORCYCLES

Exclusive designed cover allows to view the rotating front pulley. The kit is composed from stainless steel and aluminum parts with hi-end finishes like anodizing and powder coating. Pulley cover kit and the required installation hardware kit must be ordered separately.

Fits 2021 to present RH1250 Sportster S and 2022 to present RH975 Nightster

757585 Front sprocket cover kit

757586 Installation hardware kit

ZINC PLATED REAR WHEEL SPROCKET HARDWARE KITS



NEW

Colony

Complete kits include everything needed to bolt the rear sprocket or pulley to the wheel.

Fits wire rear wheels on chain drive 1973-1985 Big Twin and 1973-1978 Sportster

780180 Kit with five 7/16-20x1 1/4" UNF hex head bolts (OEM 41197-73) and five locknuts (OEM 7825), zinc plated

Fits cast and wire rear wheels on 2006-2017 Dyna and 2007-2017 Softail

780175 Kit with five 7/16-14x2 1/2" UNC hex head bolts (OEM 3873) and five hardened washers (OEM 6516HW), zinc plated

Fits cast rear wheels on 1979-1990 Sportster and 1973-1992 Big Twin

780176 Kit with five 7/16-14x1 1/2" UNC hex head bolts (OEM 3769) and five hardened washers (OEM 6516HW), zinc plated

Fits wire rear wheels on 1979-1990 Sportster, 1973-1998 Big Twin and 1984-1996 Softail

780177 Kit with five 7/16-14x1 1/2" UNC hex head bolts (OEM 3769), five locknuts (OEM 7827W) and five hardened washers (OEM 6516HW), zinc plated

Fits wire rear wheels on 1997-1999 Softail, 1999 Dyna, 1999-2007 Touring and 2000 to present Sportster

780178 Kit with five 7/16-14x1 3/4" UNC hex head bolts (OEM 3899) and five hardened washers (OEM 6516HW), zinc plated

Fits cast rear wheels on 1991-1999 Sportster, 1991-1998 Dyna, 1993-1998 Touring, 1991-1996 Softail and 1993-1994 FXR

780178 Kit with five 7/16-14x1 3/4" UNC hex head bolts (OEM 3899) and five hardened washers (OEM 6516HW), zinc plated

Fits cast and wire rear wheels on 2000-2006 Softail and 2000-2005 Dyna

780179 Kit with five 7/16-14x2 1/4" UNC hex head bolts (OEM 3737) and five hardened washers (OEM 6516HW), zinc plated

ARLEN NESS SUPER STOPPER 6-PISTON BRAKE CALIPERS



ARLEN NESS REAR BRAKES FOR MILWAUKEE EIGHT SOFTAIL



NEW



This innovative design bracket comes with a jumper line to allow you to keep the factory brake line. Bracket is designed to accept Arlen Ness 4- and differential bore 6 piston performance brake calipers. These CNC machined calipers are a 3D sculptured design with cooling fins machined into the inner caliper halves help facilitate cooling incurred while braking. Caliper and bracket are sold separately. Calipers include DP brake pads, bleeder screw, banjo bolt, sealing washers, mounting hardware and shim kit. Compatible with ABS & non-ABS applications.

- A300020** Black anodized rear brake caliper bracket only, fits all 2018 to present Milwaukee Eight Softail
- A02223** Black 4-piston caliper only
- A02217** Black differential bore 6-piston caliper only
- A02229** Red differential bore 6-piston caliper only

ARLEN NESS STOCKER MIRRORS



These 6-piston differential bore brake calipers are CNC machined from billet aluminum. They feature caliper bodies that are engineered for form and function. The 3D sculptured design with cooling fins machined into the inner caliper halves help facilitate cooling incurred while braking. Calipers are sold each and include DP brake pads, bleeder screw, banjo bolt, sealing washers, mounting hardware and shim kit. Compatible with ABS & non-ABS applications.

Fits with 11.8" (300mm) disc rotors on 2000 to present Touring, 2000 to present Softail with 41mm or 49mm forks, 2000 to present XL Sportster with 39mm or 49mm front forks, 2002-2017 V-Rod with 49mm forks and 2000-2017 Dyna Models with 11 1/2" disc must convert to 11.8" (300mm) disc

- A02215** Left, black
- A02217** Right, black
- A02226** Left, red
- A02229** Right, red



Clean smooth flowing design mirrors with the head and stem forged from aluminum. Feature Heavy Duty Stainless Steel internal pivot hardware. Come with SAE and metric mounting hardware to make installation on American, European and Japanese motorcycles a breeze. Mirror head is 4 1/2" (11.4cm) wide and 2 3/4" (7cm) high. Overall width 6 1/4" (15.9cm), overall height 5 3/8" (13.6cm).

Black anodized

- A13156** Left
- A13158** Right

Blue anodized

- A13150** Left
- A13153** Right

Red anodized

- A13152** Left
- A13155** Right

Gold anodized

- A13151** Left
- A13154** Right

Titanium anodized

- A13168** Left
- A13169** Derecha

Chrome

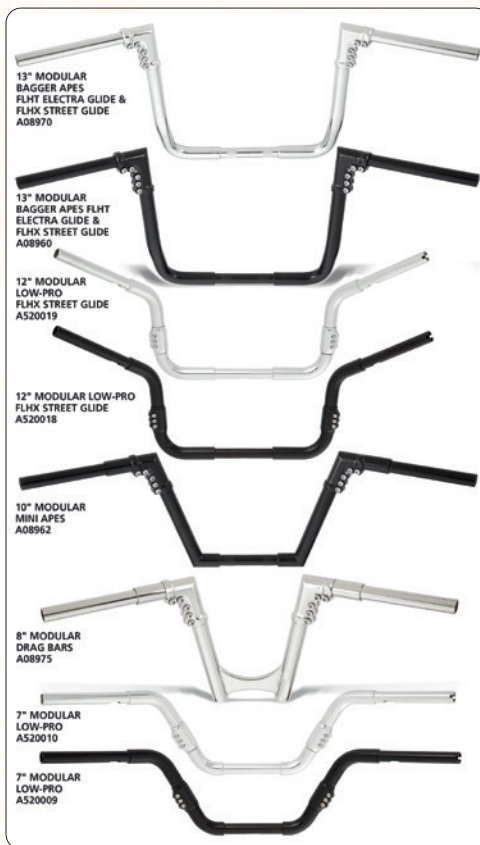
- A13157** Left
- A13159** Right



ARLEN NESS MODULAR HANDLEBARS



These Patent Pending design handlebars combine function and adjustability. They feature 1 1/4" (32mm) steel tubing with billet aluminum junction clamps that rotate towards or away from the rider for their desired comfort needs. All bars feature a 45 degree adjustable pullback and are drilled and slotted for internal wiring and can be used for cable as well as Throttle-By-Wire applications. Drag bars and Mini Apes bolt on directly to 3 1/2" center to center handlebar mounts on the upper triple tree of all Softail, Dyna and Sportster. Bagger Apes have the 1" diameter, 3 1/2" center to center knurling to fit most Harley models.



13" Modular Bagger Apes FLHT Electra Glide & FLHX Street Glide

Chrome	Black	Center Width	Width	Rise	Pullback
A08970	A08960	15" (38cm)	36" (91.5cm)	13" (33cm)	0"-8" (0-20cm)

NEW 12" Modular Low-Pro FLHX Street Glide

Chrome	Black	Center Width	Width	Rise	Pullback
A520019	A520018	12" (30.5cm)	33" (84cm)	12" (30.5cm)	0"-6" (0-15cm)

NEW 10" Modular Mini Apes

Chrome	Black	Center Width	Width	Width	Pullback
-	A08962	10" (25cm)	35" (89cm)	10" (25cm)	0"-5" (0-13cm)

8" Modular Drag Bars

Chrome	Black	Center Width	Width	Rise	Pullback
A08975	-	3 1/2" (9cm)	25" (64cm)	8" (20cm)	0"-8" (0-20cm)

NEW 7" Modular Low-Pro

Chrome	Black	Center Width	Width	Rise	Pullback
A520010	A520009	7" (18cm)	36" (91.5cm)	7" (18cm)	0"-6" (0-15cm)



HANDLEBAR GRIPS FOR 1935-1948 HARLEY'S



Grip sets for use on 1935-1948 models with twistgrips on both the left and right side.



NEW

720043 Groove style, replica 1935-1948 style black handlebar grip set, Samwel (OEM 3310-35B, 56204-35)

HANDLEBAR GRIPS FOR 1949-1972 HARLEY'S



Grip sets for use on 1949-1972 models with twistgrips on both the left and right side.



NEW

789602 Waffle style, replica 1949-1972 style black handlebar grip set, V-Twin Mfg. (OEM 56210-47)

COLONY BRAKE DRUM BOLT KITS



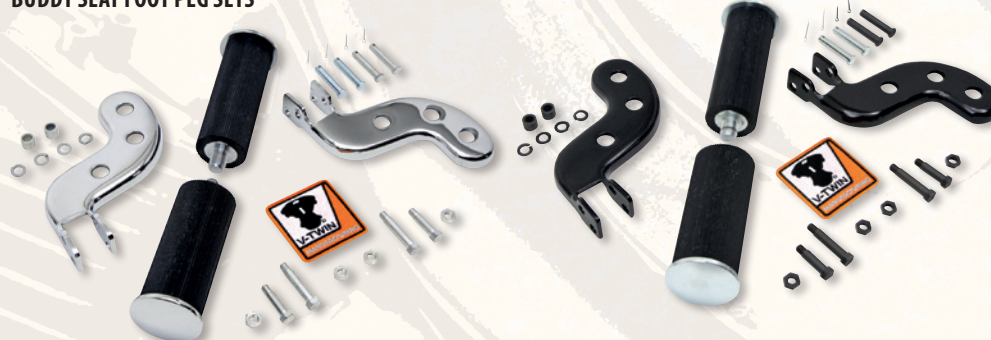
Colony

NEW

Exact reproductions from the stock shouldered 5/16-24 brake drum bolts (3/4" long OEM 3971, 1" long OEM 3970B) and Flexloc nuts (OEM 7725) in convenient kits.

- 780146** Fits all 1952-1956 K models and all 1957-1965 Sportster with 3/4" long bolts, chrome
- 780147** Fits all 1952-1956 K models and all 1957-1965 Sportster with 3/4" long bolts, white plated
- 780144** Fits all 1966-1978 Sportster with 1" long bolts, chrome
- 780145** Fits all 1966-1978 Sportster with 1" long bolts, white plated

BUDDY SEAT FOOT PEG SETS



NEW

Complete passenger foot peg sets as originally used with a buddy seat on 1940-1948 Knucklehead, 1948-1952 Panhead and 1941-1964 FL Big Twin.

789620 Set with chrome brackets and chrome foot pegs with black rubbers

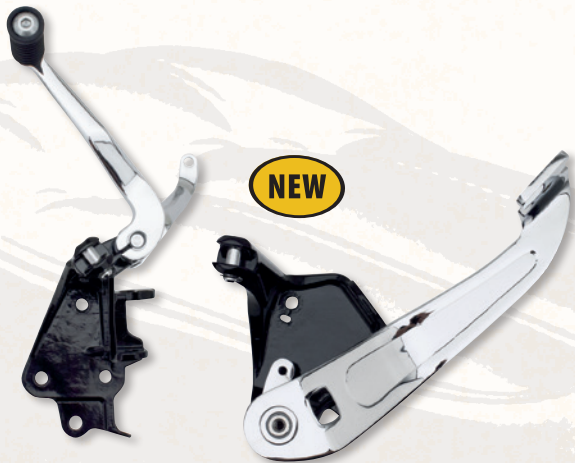
789621 Set with black brackets and zinc plated foot pegs with black rubbers

FORWARD CONTROL KIT FOR TWIN CAM FL SOFTAIL MODELS



GENUINE
ZODIAC
2 YEARS
WARRANTY

Convert from foot boards to forward controls with this bolt-on kit. Includes brake- and shifter mounts, shift lever, brake lever and required hardware. Order foot pegs and brake pedal pad separately.



Fits 2007-2017 FLSTC Heritage Classic, FLSTF Fat Boy Standard, FLSTN Deluxe, FLSTS Cross Bones and FLSTSC Heritage Classic Springer

056111 Kit with chrome brake- and shifter mounts (OEM 33909-08A)

056112 Kit with black brake- and shifter mounts (OEM 33909-08A)

BOBBED REAR FENDER FOR DYNA



NEW

Steel rear fender as stock on 2006-2008 FXDWG Dyna Wide Glide can also be fitted to all other 2006-2017 Dyna.

789597 FXDWG rear fender (OEM 59925-06)

FOOT PEG HARDWARE KIT FOR MILWAUKEE EIGHT SOFTAIL



GENUINE
ZODIAC

NEW

Convenient kit with all parts that are easily lost when taking off the passenger foot pegs. Contains two foot peg detent springs (OEM 50500706), two balls (OEM 50500707) and two plates (OEM 50500705) and two driver foot peg return springs (OEM 50500703).

352239 2018 to present Milwaukee Eight Softail foot peg hardware kit

Individual parts

352238 Set of two detent balls (OEM 50500707)

V-STREAM WINDSCREENS FOR PAN AMERICA



national cycle

National Cycle revolutionizes windscreen performance with the V-Stream Windscreen! The patented "V" shape and advanced dimensional contours push the wind vortex away from the rider's head, resulting in a more, quiet riding environment. These windscreens come in 2.0mm Quantum hard coated polycarbonate, and come with replacement deflectors in 1.5mm Quantum hard coated polycarbonate that are taller and wider than the OEM components. Windscreens bolt straight onto the OEM windscreen mounts, offering the standard adjustment options. Shields are offered with either a plain edge or an E43R EU-compliant beaded edge. Quantum hard coated polycarbonate is the material of choice for serious motorcycle riders. It is ten times more abrasion resistant than FMR hard coated polycarbonate, and thirty times more than windscreens made from commonly used acrylic or "aircraft plastic". This high quality material, along with state-of-the-art manufacturing techniques, provides outstanding clarity, impact strength and scratch resistance unmatched by any windscreen maker worldwide.

735340



735942



735341



735343



Fits 2021 to present Harley-Davidson RA1250 & RA1250S Pan America
Windscreen height is measured from the top of the headlight cutout to the top of the screen

735340 Clear, 13 3/4" (34.9cm) EU compliant beaded edge windscreen with deflectors

735341 Clear, 16.38" (41.6cm) EU compliant beaded edge windscreen with deflectors

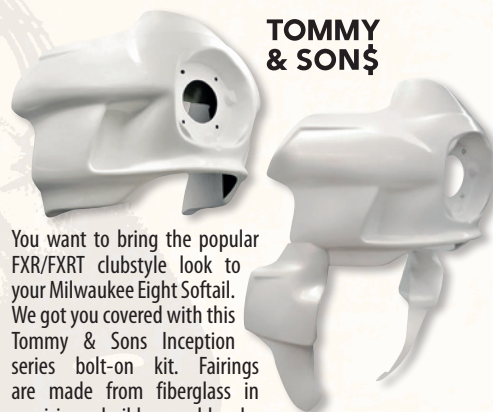
735342 Clear, 13 3/4" (34.9cm) standard US routed edge windscreen with deflectors

735343 Clear, 16.38" (41.6cm) standard US routed edge windscreen with deflectors

YouTube



T&S INCEPTION SERIES FXRT STYLE BOLT ON FAIRING KIT



TOMMY & SONS

You want to bring the popular FXR/FXRT clubstyle look to your Milwaukee Eight Softail. We got you covered with this Tommy & Sons Inception series bolt-on kit. Fairings are made from fiberglass in precision build moulds by Tommy & Sons. Have a white gel coat finish, ready for your painter's preparation. Comes with all the mounting hardware, brackets, clear headlight cover and clear windshield.

Note: Requires the separate purchase of a 7" head light and rings. Fairing is designed for FXLR and FXLRS Low Rider. Installation requires modifications on FXFB & FXFBS Fat Bob.

761185 T&S FXRT Style Fairing kit without lowers Softail 2018 to present

761186 T&S FXRT Style Fairing kit with lowers Softail 2018 to present

TOMMY & SONS CHIN SPOILER FOR DYNA



TOMMY & SONS

These chin spoilers or motor spoilers are made from fiberglass in precision build molds by Tommy & Sons. The spoilers have a white gel coat finish, ready for your painter's preparation. Designed for custom fitment, requires fabrication of mounting brackets.

761187 Chin spoiler, fits all 1999-2005 Dyna



FRONT FENDER LAMP WIRE KIT FOR VINTAGE MODELS



Colony

Complete set with duplicates of the steel tube, clamps, nuts, connectors, wire and loom to secure the wire to the fender as originally found on all 1935-1947 Harley-Davidson models.

780143 Front fender lamp wire kit, Colony

FENDER RIVETS FOR VINTAGE MODELS



Colony

Reproduction of the OEM fender rivets and hinge pins as used on 1930-1979 Harley-Davidson models.

780182 Fender hinge pin (brass, OEM 3752-30) and rivets (OEM 0314, 8515) kit, 1930-1942

780183 Fender hinge pin (steel, OEM 59862-30) and rivets (OEM 0314, 8515) kit, 1943-1979

780184 Set of 10 pieces 3/16"x3/8" rivets only (OEM 0314, 8515)

780185 Set of 10 pieces 3/16"x1/2" rivets only (OEM 0315, 8521)

780186 Fender to brace kit with installation tool, 3/16"x3/8" rivets (OEM 0314, 8515)

780187 Fender to brace kit with installation tool, 3/16"x1/2" rivets (OEM 0315, 8521)

THE 2023-2024 ZODIAC BIKERS BOOK



NEW

999999-E Zodiac 2023-2024 Catalog, English

999999-F Zodiac 2023-2024 Catalogue, French

999999-D Zodiac 2023-2024 Katalog, German

999999-I Zodiac Catalogo 2023-2024, Italiano

999999-S Zodiac Catalogo 2023-2024, Español

REPLICA FENDERS EMBLEMS



NEW

Exact copies from the genuine script style emblems for restoration projects.

789634 Set of two "Electra Glide" as on 1965-1984 Big Twin, install with speed nuts for 1/8" studs (OEM 59196-65)

789635 Set of two "Hydra Glide" scripts with speed nuts as on 1950-1951 Big Twin (OEM 91852-50)

789636 Set of two "Duo Glide" scripts with speed nuts as on 1958-1964 Big Twin (OEM 59195-58)

789637 Set of two 2 1/2" long (6.3cm) "Deluxe" scripts with speed nuts as originally sold as an accessory

Speed clips only

789642 Speed nuts for 1/8" studs, 10-pack (OEM 7613A)

RUBBER FRONT FENDER BUMPER FOR TOURING



NEW

Rubber as originally fitted onto the front bumper on 1977-1984 FL and 1984 and later Road King Police and Electra Glide Police.

789632 Front bumper rubber (OEM 91107-77B)

COLONY SPEEDOMETER MOUNT SCREWS FOR VINTAGE MODELS



NEW

Colony

Set with four of each white plated #12 round head screws, washers and nuts that bolt all 1936 and later Stewart-Warner speedometers to the dash base.

780195 Colony speedometer mounting kit (OEM old 041, 0255 & 0106, new 2723, 7030 & 7654)