



PRODUCT NEWS

ISSUE 44 • 34 • JANUARY 2024



STEP-UP SEAT FOR MILWAUKEE EIGHT SOFTAIL

Features a smooth, sleek design that hugs the frame rails for a true custom look [Read more inside 34-003](#)



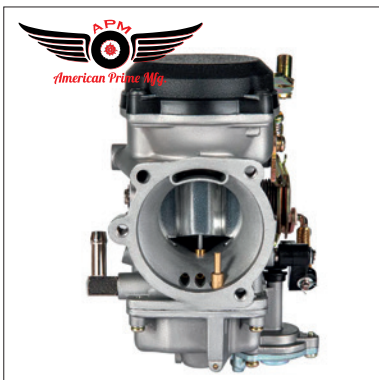
SPRING SOLO SEAT FOR SPORTSTER

The low-profile design provides the minimalistic "just enough to ride" look [Read more inside 34-006](#)



ADJUSTABLE SLIP-ON MUFFLERS FOR INDIAN CHIEF

E-approved slip-ons with an adjustable exhaust valve that allows you to tune the sound of your bike [Read more inside 34-008](#)



APM REPLICA KEIHIN CV40 CARBURETOR American Prime Manufacturing replica Keihin CV40 [Read more inside 34-009](#)



SPEEDOMETERS FOR FLATHEAD, SERVICAR & BIG TWIN Replica speedometers with the right colors for the years listed [Read more inside 34-020](#)



FXR POLICE STYLE FAIRING FOR TWIN CAM DYNA AND MILWAUKEE EIGHT SOFTAIL Styled after the original FXR Police fairing [Read more inside 34-021](#)



ZAN GAITER MASK WITH FILTER



NEW ZANHEADGEAR®

The ZAN headgear Gaiter Mask features an interior pocket with a PM 2.5 filter, built-in aluminum nose bridge and pre-cut ear loops. The gaiter mask is made from breathable, moisture wicking polyester to allow comfort in all climates. The built-in aluminum nose bridge provides a secure fit, creating a tighter seal & reduced fogging when worn with eyewear.

734490 Zan Gaiter mask

ZAN POLYESTER BALACLAVA



NEW ZANHEADGEAR®

The ZAN headgear polyester Balaclava offers optimal protection from the elements by providing coverage of the head, neck and face. Constructed of 100% stretchy polyester, this balaclava allows for snug, yet comfortable fit. It also features two smooth seams that are strategically placed to eliminate an irritating pressure point that a center seam may cause when worn under a helmet. The ZAN headgear Balaclava also boasts vibrant graphics and its contoured design mitigates uncomfortable bunching.

734491 Zan Gaiter mask

ZAN HALF MASK



NEW ZANHEADGEAR®

The ZAN Headgear neoprene half face mask features full coverage of the nose, chin, and cheeks with stretchy, warm and water resistant 2mm thick neoprene. It has a black stretch nylon trim for added durability and clean finish. A hook and loop closure allows for adjustability and ensures great fit. Provides coverage of the ears, nose and cheeks from the elements. Can be used with or without a helmet. One size fits most. Material: 70% Neoprene, 30% Polyester. U.S. Patented design.

734492 Zan half mask

BOBSTER RIDER SUNGLASSES



NEW BOBSTER® EYE-TECH FOR ANY ADVENTURE®

Rider is a comfortable sunglass with a matte black frame and removable foam. Great fit with ANSI Z87 Certification for protection, and anti-fog coating to keep your lenses clear when body temperature rises. The Rider includes a microfiber cloth, and a carry case for easy transport.

734483 Bobster Rider sunglass

BOBSTER SWIFT GLASSES



NEW BOBSTER® EYE-TECH FOR ANY ADVENTURE®

Swift is a great light weight sunglass with quick & easy interchangeable lenses. This frame has small snap levers on each temple that allow for quick lens changing. The frame has a wrap for active users & lens shape allows for multiple shaped faces. Includes smoked, clear, and yellow anti-fog lenses, a microfiber pouch and cloth.

734484 Bobster Swift sunglass

BOBSTER TREAD SUNGLASSES



NEW BOBSTER® EYE-TECH FOR ANY ADVENTURE®

Tread is a perfect everyday sunglass. With removable foam, you can wear with or without. Textured Rubber nose pads and temple ends to lightly grip and secure. Anti-fog lenses to keep lens clarity when your body temperature rises. ANSI certified. RX eligible. The Tread also comes with a carry case and a microfiber cloth to keep your sunglasses in best condition possible.

734485 Bobster Tread sunglass

BOBSTER CHARGER SUNGLASSES



NEW BOBSTER® EYE-TECH FOR ANY ADVENTURE®

The Charger features ANSI Z87 certified, anti-fog smoke polycarbonate lenses and clean wrap around line; it's an excellent choice for safety and style. The durable, gloss black polycarbonate frame fits securely and comfortably, even on smaller faces and it is easy to fit in it's included microfiber pouch.

734486 Bobster Charger sunglass

BOBSTER ENFORCER SUNGLASSES



NEW BOBSTER® EYE-TECH FOR ANY ADVENTURE®

The Enforcer with its matte black frame is one tough looking eyewear. The single shield lens wraps around the face to protect against wind and debris. Anti-fog smoked, clear and amber lenses are included so they can be changed according to the current lighting conditions. The Enforcer also comes with a cleaning cloth and carry case.

734487 Bobster Enforcer sunglass

BOBSTER FOAMERZ SUNGLASSES



NEW **BOBSTER**
EYE-TECH FOR ANY ADVENTURE®

The Foamerz provide cushion with comfort. These wrap around sunglasses stay put and fit easily under a helmet, providing all the benefits of a goggle in a sunglass style. This polycarbonate, lightweight frame holds curved arms that hug the head while anti-fog, polycarbonate lenses protect the eyes with 100% UVA/UVB protection. A durable carrying case is included as well for convenient transport. Available with your choice of smoked, amber or clear anti-fog polycarbonate lenses.

744361 With smoked lenses

744362 With amber lenses

744363 With clear lenses

BOBSTER WHISKEY SUNGLASSES



NEW **BOBSTER**
EYE-TECH FOR ANY ADVENTURE®

The Whiskey exceeds the ballistic impact requirements of the new MCEPS standard keeping you safe on patrol, and the anti-fog smoked lenses, black frame and gun metal detailing keep you looking good while you do it. The 8 base wrap design provides excellent peripheral vision as it protects. The Whiskey comes equipped with a carry case and microfiber cleaning cloth.

734489 Bobster Whiskey sunglass

C.C. RIDER 2-UP TOURING SEAT FOR SPORTSTER IRON



NEW **C.C. Rider**

No matter if you are alone or with a passenger on the bike, this seat is sculpted to keep you happy in the saddle.

Fits 2016-2022 XL883N and XL1200NS Sportster Iron

770822 C.C. Rider 2-Up Touring style seat, pleated

ZAN MOTLEY TUBES



NEW **ZANHEADGEAR**®

Made from breathable, moisture wicking polyester, the ZAN headgear Motley tubes are comfortable to wear in both warm and cold climates. The versatility of the Motley tube allows it to be worn six different ways; a beanie, ear warmer, desert scarf, face mask, neck warmer, or balaclava. Material: 100% Polyester.

734493 Zan Motley Tube, B&W USA Flag

734494 Zan Motley Tube, Black

734495 Zan Motley Tube, Woodland Camo

734496 Zan Motley Tube, Olive

734497 Zan Motley Tube, Pinstripe Web

734498 Zan Motley Tube, Pinstripe Flame

734499 Zan Motley Tube, Mexican Flag

C.C. RIDER TAPER TAIL SOLO SEAT FOR SPORTSTER



770812



770813

770814

770834

NEW **C.C. Rider**

The One-Up design features a high back pad that holds the rider in place and provides a direct connection to the bike. You sit "in" the bike, and your hands and feet reach naturally to the controls. The tapered tail enhances the bike's sporting profile. Seat is sculpted to keep you happy in the saddle.

Fits all 2010-2022 XL Sportster

770812 C.C. Rider Taper Tail solo seat, plain

770813 C.C. Rider Taper Tail solo seat, seating section with diamond stitch

770834 C.C. Rider Taper Tail solo seat, seat panel insert with diamond stitch

770814 C.C. Rider Taper Tail solo seat, pleated



770814

C.C. RIDER STEP-UP SEAT FOR MILWAUKEE EIGHT SOFTAIL



770811



770818

770819

770820

770821

NEW **C.C. Rider**

This premium quality solo Softail seat features a smooth, sleek design that hugs the frame rails for a true custom look, designed to place the rider "in" the bike for a low-slung riding position. Meant to integrate cleanly with the lines of your bike, this saddle gives your bike a lean and clean appearance. Comfort and support are hardly in short supply as each seat is sculpted to keep you happy in the saddle.

Fits 2018 to present FXBB & FXBBS Street Bob and 2020 to present FXST Standard

770811 C.C. Rider Step-Up seat, plain

770818 C.C. Rider Step-Up seat, center band with diamond stitch

770819 C.C. Rider Step-Up seat, full diamond stitch

770820 C.C. Rider Step-Up seat, panel diamond stitch

770821 C.C. Rider Step-Up seat, pleated

C.C. RIDER 2-UP DEEP BUCKET SEAT FOR MILWAUKEE EIGHT FATBOY



NEW C.C. Rider

The 2-Up Deep Bucket seat is made of synthetic leather that provides maximum comfort for both rider and passenger. With the high-quality foam material, it is adopted to guarantee equal force to the seat. The Deep Bucket design provides back support for the rider. The narrow nose of the seat is sculpted to bring the legs closer making the driver control the bike easily, so it perfectly fits long-distance travel. No matter if you are alone or with a passenger on the bike, this seat is sculpted to keep you happy in the saddle.

Fits 2018 to present FLFB & FLFBS Fat Boy
770823 C.C. Rider 2-Up Deep Bucket seat, plain

C.C. RIDER 2-UP SEATS FOR TOURING



770805



770806



770807

NEW C.C. Rider

Low design 2-Up seat has contoured driver bucket that aids in lower back support and a narrower than stock nose to allow for easier ground reach when stopped. Seat is 32.6" long, driver area is 15.4" wide, passenger area 9.8" wide.

Fits 2009 to present Touring
770805 C.C. Rider 2-Up seat, diamond stitch
770806 C.C. Rider 2-Up seat, style 1
770807 C.C. Rider 2-Up seat, pleated

C.C. RIDER SUNRISER 2-UP SEATS FOR TOURING



770827



770828

770829

NEW C.C. Rider

Deep bucket 2-Up seat in a step-up design. The Hammock-style seat provides back support for the rider and helps the rider to sit in position and reduces impact from harsh road conditions, offering protection on the backside for both rider and passenger. Manufactured from high-quality microfiber offers durability and flexibility. The unique foam offers increased isolation for both rider and passenger. Seat is ready to accept driver backrest, is 31.5" long, driver area is 16.5" wide, passenger area 15.4" wide.

Fits 2009 to present Touring and Tri-Glide Ultra Classic
770827 C.C. Rider Sunriser 2-Up seat, pleated
770828 C.C. Rider Sunriser 2-Up seat, diamond stitch
770829 C.C. Rider Sunriser 2-Up seat, plain

C.C. RIDER SOLO SEAT WITH DUO PAD FOR TOURING



NEW C.C. Rider

Install just the front seat when you want to ride solo and install the duo pad when you want to take a passenger. Seat is wide in the front to sit you in the perfect riding position with a very close to stock reach to the hand and foot controls. Offers long run touring comfort to both rider and passenger. Seat is ready to accept a driver backrest, is 30.3" (77cm) long and has 15" (38cm) wide rider area and 12.4" (31.5cm) wide passenger seat.

Fits 2009 to present Touring
770826 C.C. Rider pleated solo seat with duo pad

C.C. RIDER LOW PRO BUCKET SEAT FOR TOURING



NEW C.C. Rider

Low slammed 2-Up seat with a bucket contour driver area for added comfort.

Fits 2009 to present Touring and Tri Glide Ultra
770830 C.C. Rider Low Pro Bucket seat

C.C. RIDER 2-UP PLEATED SEAT FOR INDIAN SCOUT



NEW C.C. Rider

This Indian Scout sport seat features lean, sculpted, and sporty styling for a custom look. The stylish design complements the bike's flowing lines and looks like it was crafted specifically for your bike. The specially shaped cushioning in this seat lowers the ride height slightly and sets the rider slightly forward from the stock seating location. As a result, the rider has a reduced reach from the seat to the foot pegs, which enhances comfort and riding confidence. The seat features a wider seat surface that is contoured for the greatest comfort, and it's padded to provide the ideal mix of cushion and support.

Fits all 2015 to present Indian Scout
770800 C.C. Rider 2-Up Scout seat, black

C.C. RIDER 2-UP REACH SEAT FOR BIG INCH INDIAN



NEW C.C. Rider

The 2-Up Reach seat provides maximum comfort for the rider and passenger. It is cut and diamond stitched by hand and is treated for enhanced durability in all conditions.

Fits all 2014 to present Indian Challenger, Chief, Chieftain, Roadmaster, Springfield and Vintage models
770804 C.C. Rider 2-Up Reach seat, black

C.C. RIDER 2-UP SEAT FOR BIG INCH INDIAN



NEW *C.C. Rider*

Cowhide leather 2-Up seat has a gently curved shape that provides hours of passenger comfort, whilst the large backrest area in the driver section is great for long touring.

Fits all 2014 to present Indian Challenger, Chief, Chieftain, Roadmaster, Springfield and Vintage models

770801 C.C. Rider 2-Up seat with studs, black

770802 C.C. Rider 2-Up seat, diamond stitch, black

770803 C.C. Rider 2-Up seat, pleated, black

C.C. RIDER 2-UP SEAT FOR DYNA



NEW *C.C. Rider*

A low design seat that delivers reduced seat height, ideal for those who want a short reach to the ground. The lean and long shape allows you to move your body to a position that suits you best. Use with a pillion may require the separate purchase of a passenger foot peg kit. Seat is sculpted to keep you happy in the saddle.

Fits all 2006-2017 Dyna

770825 C.C. Rider 2-Up seat, plain

770815 C.C. Rider 2-Up seat, driver area with diamond stitch, plain passenger area

770816 C.C. Rider 2-Up seat, driver and passenger area with diamond stitch

770817 C.C. Rider 2-Up seat, driver and passenger area breathing with diamond stitch

C.C. RIDER 2-UP SEAT FOR MILWAUKEE EIGHT LOW RIDER



NEW *C.C. Rider*

This driver and passenger seat features high-resilience foam that provides maximum comfort. The cover is made of microfiber artificial leather, making sure for durability and breathability. The front of the seat helps the rider to stay in position during riding, bringing a comfortable driving experience. The low position design reduces the seat height and allows riders to move back from hand and foot controls without sitting higher on the bike.

Fits 2018 to present FXLR, FXLRS, FXLRST and FXRST Low Rider

770824 C.C. Rider 2-Up Low Rider seat, pleated

ADJUSTABLE DRIVER BACKREST FOR TOURING



NEW

Adds back support to increase riding comfort. The four-way adjustable driver backrest with a comfy pad provides full lower back support without pushing the rider to the tank. The backrest with its slim profile is foldable to ease passenger mounting and offers the passenger plenty of room. Fits with one-piece slotted seat only, does not fit with other seats.

Fits 2009 to present Touring with a one-piece slotted seat

770870 Smooth driver backrest with adjustable mounting kit (OEM 52900-09A with 52589-09A)



C.C. RIDER 2-UP REDUCED REACH SEAT FOR XG STREET



NEW *C.C. Rider*

Designed specifically for riders requiring a riding position close to the handlebar, this Reach Seat is shaped to place the rider in a comfortable and confident relationship to the hand and foot controls. Moves the rider approximately 1 1/2" (4cm) lower and 1 1/4" (3cm) forward. Additionally, the 1 1/4" (3cm) slimmer front profile brings the legs closer together for an easier reach to the ground at a stop.

Fits 2015-2020 XG500 and XG750 Street

770835 C.C. 2-up Reduced Reach seat

C.C. RIDER SUNRIDER 2-UP SEATS FOR TOURING



NEW *C.C. Rider*

The 16 1/5" (42cm) wide front seat sets the rider back 1 1/5" (4cm) compared to the stock seat, angling angles the body for long-distance comfort. The 15.4" (39cm) wide rear seat provides support across its full width and keeps the passenger firmly in the comfort zone. Seat is ready to accept driver backrest.

Fits 2009 to present Touring and Tri-Glide Ultra Classic

770840 C.C. Rider Sunrider 2-up seat, pleated

C.C. RIDER 2-UP TUCK-AND-ROLL SEAT FOR MILWAUKEE EIGHT SOFTAIL



NEW *C.C. Rider*

Driver seat that can be used with or without the remote fitted pillion. Note that when used with a passenger, it is legally required to have footrests for him or her too.

Fits 2018 to present FXBB & FXBBS Street Bob and 2020 to present FXST Standard

770833 C.C. Rider 2-up seat pleated

C.C. RIDER SPRING SOLO SEAT FOR SPORTSTER



NEW *C.C. Rider*

The low-profile design provides the minimalistic "just enough to ride" look. The included smooth metal seat pan and the simple frame cover leave a clean, finished appearance. Easy to install with no cutting, welding or fabrication. Seat is sculpted to keep you happy in the saddle and features torsion type springs to improve comfort.

**Fits all 2004-2006 and 2010-2022 XL Sportster
Fits 2007-2009 XL Sportster when the ECM is relocated**
770831 C.C. Rider spring solo seat, black

C.C. RIDER SOLO SEAT FOR MILWAUKEE EIGHT SOFTAIL



NEW *C.C. Rider*

This premium quality solo Softail Seat features a smooth, sleek design that hugs the frame rails for a true custom look, designed to place the rider "in" the bike for a low-slung riding position. Meant to integrate cleanly with the lines of your bike, this saddle gives your bike a lean and clean appearance. Comfort and support are hardly in short supply as each seat is sculpted to keep you happy in the saddle.

Fits 2018-2020 FLDE Deluxe, 2018 to present FLHC & FLHCS Heritage, 2018-2021 FLSL Slim, 2018 to present FXBB & FXBBS Street Bob and 2020 to present FXST Standard
770832 C.C. Rider Solo seat, plain
770808 C.C. Rider Solo seat, pleated
770809 C.C. Rider Solo seat, Diamond stitch
770810 C.C. Rider Solo seat, full length Diamond stitch

C.C. RIDER 2-UP DEEP BUCKET SEAT FOR MILWAUKEE EIGHT SOFTAIL



NEW *C.C. Rider*

The front Deep Bucket design provides back support for the rider and the narrow nose brings your feet closer to the ground. The pillion section is 8 5/8" (22cm) wide and give plenty of seat space for your passenger.

Fits 2018 to present FXBR & FXBRS Breakout
770836 C.C. Rider 2-up Deep Bucket seat

C.C. RIDER 2-UP BUCKET SEAT FOR 1997-2007 TOURING



NEW *C.C. Rider*

This seat has a tapered nose to bring the legs closer together. The 14" (36cm) wide bucket-shaped rider section provides loads of back support. The 15" (38cm) wide rear seat area provides maximum comfort for your passenger. Seat is ready to take a rider backrest.

Fits all 1997-2007 Touring
770841 C.C. Rider spring solo seat, black

C.C. RIDER DUAL USE TWO-PIECE SEAT FOR TOURING



NEW *C.C. Rider*

Install just the front seat when you want to ride solo and add the rear seat when you want to take a passenger. Great for long distance trips. Driver seating area is 14 1/2" (37cm) wide, passenger seating is 11" (28cm) wide.

Fits 2009 to present Road King, Road Glide, Street Glide and CVO Street Glide
770838 C.C. Rider dual use two-piece seat, diamond stitching
770839 C.C. Rider dual use two-piece seat, large diamond stitching

C.C. RIDER SOLO AND DUAL SEAT COMBO FOR TOURING

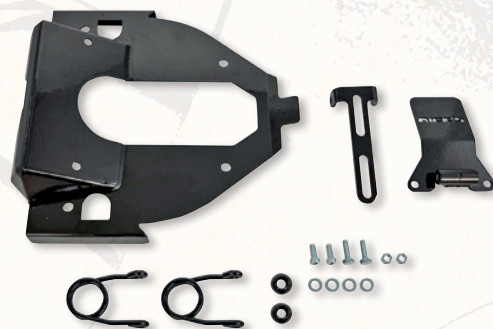


NEW *C.C. Rider*

Install just the front seat when you want to ride solo and add the rear seat when you want to take a passenger. Great for long distance trips. Driver seating area is 14 1/2" (37cm) wide, passenger seating is 11" (28cm) wide.

Fits 2009 to present Road King, Road Glide, Street Glide and CVO Street Glide
770837 C.C. Rider solo/dual seat combo, pleated

RICKS MOUNTING KIT FOR SPRING SOLO SEATS ON SOFTAIL



NEW **RICK'S®**
MOTORCYCLES

Complete kit with powder coated base plate, torsion type seat springs and required hardware to fit a spring mounted solo seat on selected Milwaukee Eight Softails. The base plate covers the battery and electronics compartment.

Fits 2018-2020 FLDE Deluxe, 2019-2021 FLSL Slim, 2018 to present FLHC & FLHCS Heritage, 2018 to present FXBB & FXBBS Street Bob, 2018 to present FXFB & FXFBS Fat Bob and 2018 to present FXLR, FXLRS, FXLRST & FXRST Low Rider
770132 Solo seat mounting kit

FREEDOM PERFORMANCE RADICAL RADIUS FOR RH SPORTSTER S



- Exclusive Cross-Over Performance collector for max horsepower and torque
- 1-piece full length heat shields prevent chipping, rust and peeling between sections
- Exhausts have removable baffles, optional quiet baffles available
- Complete with mounting hardware and brackets
- Unmatched sound & performance



Fits 2021 to present RH1250S Sportster S

- 794812** All chrome with Slash Cut end caps
- 794813** Chrome with black sculpted Slash Cut end caps
- 794814** Chrome with all black Slash Cut end caps
- 794815** Chrome with gold sculpted Slash Cut end caps
- 794816** Chrome with all gold Slash Cut end caps
- 794817** Black with chrome Slash Cut end caps
- 794818** Black with black sculpted Slash Cut end caps
- 794819** All black with Slash Cut end caps
- 794820** Black with gold sculpted Slash Cut end caps
- 794821** Black with gold Slash Cut end caps
- 794822** All chrome with Straight Cut Star end caps
- 794823** Chrome with black sculpted Straight Cut Star end caps
- 794824** Chrome with all black Straight Cut Star end caps
- 794825** Chrome with gold sculpted Straight Cut Star end caps
- 794826** Chrome with all gold Straight Cut Star end caps
- 794827** Black with chrome Straight Cut Star end caps
- 794828** Black with black sculpted Straight Cut Star end caps
- 794829** All black with Straight Cut Star end caps
- 794830** Black with gold sculpted Straight Cut Star end caps
- 794831** Black with gold Straight Cut Star end caps

Accessories

- 794852** Optional quiet baffle set

O2 SENSOR BUNG PLUGS AND ADAPTERS



- 783403** Sensor bung adapter plugs, M18x1.50 to M12x1.25, pair



- 735750** Sensor bung plugs, M18 x1.5, pair

FREEDOM PERFORMANCE RADICAL RADIUS FOR RH NIGHTSTER



- Exclusive Cross-Over Performance collector for max horsepower and torque
- 1-piece full length heat shields prevent chipping, rust and peeling between sections
- Exhausts have removable baffles, optional quiet baffles available
- Complete with mounting hardware and brackets
- Unmatched sound & performance



Fits 2022 to present RH975 Nightster and RH975S Nightster Special

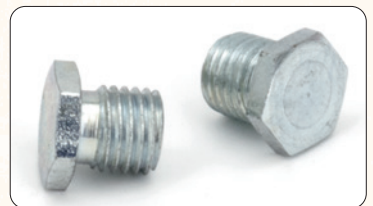
- 794832** All chrome with Slash Cut end caps
- 794833** Chrome with black sculpted Slash Cut end caps
- 794834** Chrome with all black Slash Cut end caps
- 794835** Chrome with gold sculpted Slash Cut end caps
- 794836** Chrome with all gold Slash Cut end caps
- 794837** Black with chrome Slash Cut end caps
- 794838** Black with black sculpted Slash Cut end caps
- 794839** All black with Slash Cut end caps
- 794840** Black with gold sculpted Slash Cut end caps
- 794841** Black with gold Slash Cut end caps
- 794842** All chrome with Straight Cut Star end caps
- 794843** Chrome with black sculpted Straight Cut Star end caps
- 794844** Chrome with all black Straight Cut Star end caps
- 794845** Chrome with gold sculpted Straight Cut Star end caps
- 794846** Chrome with all gold Straight Cut Star end caps
- 794847** Black with chrome Straight Cut Star end caps
- 794848** Black with black sculpted Straight Cut Star end caps
- 794849** All black with Straight Cut Star end caps
- 794850** Black with gold sculpted Straight Cut Star end caps
- 794851** Black with gold Straight Cut Star end caps

Accessories

- 794852** Optional quiet baffle set



- 783402** Sensor bung plugs, M12x1.25 with 17mm hex head, pair



- 783404** Sensor bung plugs, M10x1.25 with 1/2" hex head, pair

MCJ ADJUSTABLE SLIP-ON MUFFLERS FOR INDIAN SCOUT



STREET LEGAL!



NEW **MCJ**

E-approved slip-ons with an adjustable exhaust valve that allows you to tune the sound of your bike the way you like it, but still get back to what is legal. These exhausts come complete with a manual operated adjusting lever that can be placed on either the handlebar or below the tank. Electric operated adjusting motors are available as an option. End caps must be ordered separately.

Note: Years listed are model years as on the model information sticker on the frame.



Fits 2015 Indian Scout (Euro-3)

Order MCJ 90mm end caps separately

745489 Slip-on mufflers, without end caps, Royal 90, chrome

745488 Slip-on mufflers, without end caps, Royal 90, black

Fits 2016-2020 Indian Scout (Euro 4)

Order MCJ 90mm end caps separately

747190 Slip-on mufflers, without end caps, Race 90, chrome

747189 Slip-on mufflers, without end caps, Race 90, black

Fits 2021 to present Indian Scout (Euro 5)

Order MCJ 90mm end caps separately

747192 Slip-on mufflers, without end caps, Race 90, chrome

747191 Slip-on mufflers, without end caps, Race 90, black

Accessories

747195 Optional adjusting motor with key fob style remote control for open/close

747196 Optional adjusting motor with handlebar switch for open/close/automatic



749984



749983



749982



749981

MCJ ADJUSTABLE SLIP-ON MUFFLERS FOR INDIAN CHIEF



STREET LEGAL!



NEW **MCJ**

E-approved slip-ons with an adjustable exhaust valve that allows you to tune the sound of your bike the way you like it, but still get back to what is legal. These exhausts come complete with a manual operated adjusting lever that can be placed on either the handlebar or below the tank. Electric operated adjusting motors are available as an option. End caps must be ordered separately.

Note: Years listed are model years as on the model information sticker on the frame.



Fits 2022 to present Indian Chief standard, Bobber, Bobber Dark Horse, Dark Horse, Sport, Super, Super Dark Horse and Super Limited (Euro-5)

Order MCJ 90mm end caps separately

747194 Slip-on mufflers, without end caps, Race 90, chrome

747193 Slip-on mufflers, without end caps, Race 90, black

Accessories

747195 Optional adjusting motor with key fob style remote control for open/close

747196 Optional adjusting motor with handlebar switch for open/close/automatic



749986



749989



749991



749987



749990

WYATT-GATLING FISHTAIL DRAG MUFFLERS



Chrome straight-through Fishtails with welded-on top brackets. Install with existing hardware and clamps. Order two of each baffles ZPN 063003 or 063008 separately.

Fits 1985-1994 Touring

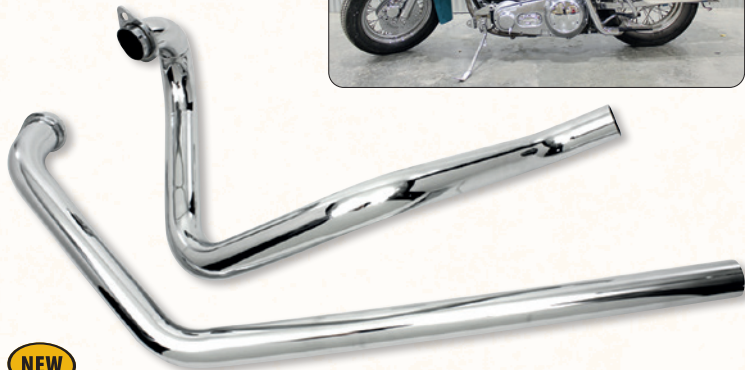
734947 29" (74cm) long Straight Fishtails, set of left and right

Fits 1995-2016 Touring

789560 33" (84cm) long Straight Fishtails, set of left and right

789561 36" (91cm) long Straight Fishtails, set of left and right

TRUE DUAL HEADERS FOR LATE SHOVELHEAD



NEW

True dual exhaust system features completely separate and independently functioning exhaust pipes. Headers are 1 3/4" (44.5mm) outer diameter and work with kick start and floorboards.

789298 Chrome true dual headers, fits 1970-1984 4-speed FL Shovelhead

GOOSENECK DRAG PIPES FOR FX SHOVELHEAD



NEW

Set of chrome plated 1 3/4" (44mm) drag pipes. Pipes are 38" long with turn-out ends and tunnel mounts. Also work with kick start equipped models. Tunnel mount bracket, gaskets and T-bolts not included but must be ordered separately.

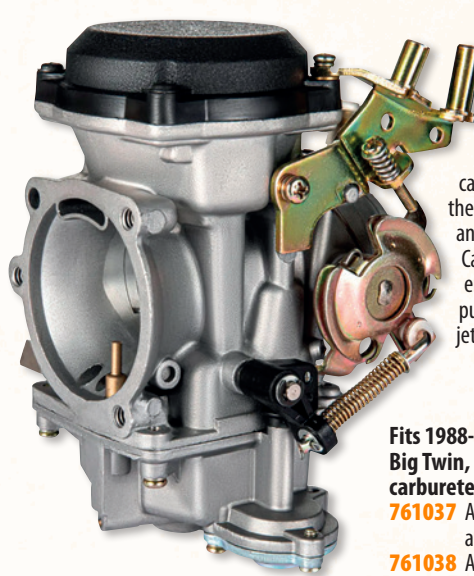
Fits 1974-1984 FX Shovelhead

789297 Gooseneck chrome drag pipes

789423 Black tunnel mount bracket for FX drag pipes

231969 Cycle Shack style T-bolts with nuts, set of two

APM REPLICA KEIHIN CV40 CARBURETOR



NEW



American Prime Manufacturing replica Keihin CV40 (Constant Vacuum) carburetor is so close to the original that you even can use OEM parts to tune or rebuild them. Carburetor comes with main jet and slow jet as used on most Twin Cam Softail. Other models and tuned engines may require the separate purchase of other size main and slow jets.

Fits 1988-2006 Sportster, 1990-1999 Big Twin, 1999-2006 Twin Cam and carbureted Buell

761037 APM CV40 carburetor, natural zinc/aluminum finish (OEM 27492-96B)

761038 APM CV40 carburetor, black finish

ELIMINATOR II SU CARBURETOR KITS



NEW



No other carburetor has ever been able to approach the SU in sheer horsepower and economy over a complete RPM range. In the one and only documented comparison test of all aftermarket carburetors for the Harley, the SU easily dominated the others. A closer look at the Eliminator II SU will provide some of the reasons for its wide margin of superiority. To date no other carburetor, to date, is equipped with the sophistication and the features necessary to even approach the Eliminator II SU in performance, dependability and consistency. All Eliminator II SU carburetor kits come with manifold, manifold gasket, all necessary mounting bolts, pushpull throttle brackets and complete installation and tuning instructions. An air cleaner or velocity stack must be ordered separately.

Kits with polished SU Eliminator II carburetor and manifold

761049 Fits 1991-2003 Sportster

761035 Fits 1966-1978 Shovelhead Big Twin

761036 Fits 1979-1984 Shovelhead Big Twin

761042 Fits 1984-1992 Evolution Big Twin

761034 Fits 1993-2000 Evolution Big Twin

761045 Fits 1999-2005 Twin Cam

Kits with polished SU Eliminator II carburetor and black manifold

761048 Fits 1991-2003 Sportster

761044 Fits 1966-1978 Shovelhead Big Twin

761041 Fits 1979-1984 Shovelhead Big Twin

761043 Fits 1984-1992 Evolution Big Twin

761046 Fits 1993-2000 Evolution Big Twin

761047 Fits 1999-2005 Twin Cam

Air cleaner adapter

530006 Aluminum adapter to fit a Keihin CV style air cleaner on a SU Eliminator II carburetor

Velocity stack

Fits many SU Carburetor models. Velocity stack is unfiltered and using it in a street application could potentially cause damage to your motor. We suggest using it for show or racing applications only.

530058 Velocity stack, polished

Replacement parts

530054 Rebuild kit for SU Eliminator II carburetor

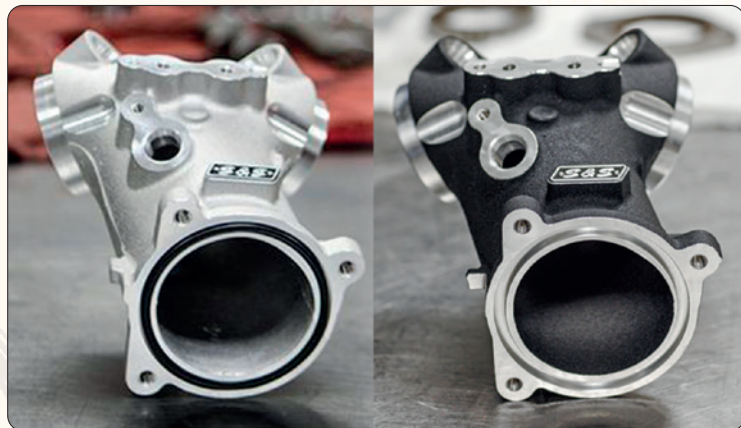
Air cleaner kits

45mm deep air cleaners with "SU" embossed on front and foam filter element

530056 Air cleaner kit, chrome

530057 Air cleaner kit, black powder coated

S&S PERFORMANCE MANIFOLD FOR MILWAUKEE EIGHT



This cast aluminum High-Flow manifold adds 3-5 HP and is straight replacement for the stock polymer unit. Comes complete with rubber seal. A must-have for top-level performance. Fits all 2017 to present Touring, all 2017 to present Trike and all 2018 to present Softail.

795057 S&S High-Flow manifold for Milwaukee Eight, raw finish (OEM 27300121)

794908 **NEW** S&S High-Flow manifold for Milwaukee Eight, black (OEM 27300121)



BLACK STAINLESS STEEL ECM SCREWS



Stainless steel screws with matt black powder coated heads are the finishing touch for your bike. Kits include all screws to hold the Electronic Control Module.

770403 Fits the ECM on all 2018 to present Softail

MANIFOLD FLANGE SCREW KIT



NEW *Colony*

Convenient kits to bolt the manifold flanges to the cylinder head.

Fits 1988-1994 Sportster and 1990-1994 Big Twin

739971 Set with four hex socket cap screws and washers, chrome, Colony

710627 Set with four hex socket cap screws, chrome, Midwest Acorn

Fits 1995-2006 Sportster and 1995-2006 Big Twin

739972 Set with four hex socket cap screws and washers, chrome, Colony

BLACK STAINLESS STEEL AIR CLEANER COVER SCREWS



NEW *SCREWS FOR BIKES*

Stainless steel screws with matt black powder coated heads are the finishing touch for your bike.

Set of two screws for the stock oval air cleaner cover on 2004-2022 XL Sportster
770423 Hex socket countersunk head

Single screw for the stock round air cleaner cover on 1983-2000 Evolution Big Twin, 2018 to present FLDE, FLHC, FLXL, FXLR, FXST

770410 Hex socket button head

Set of two screws for the stock oval air cleaner cover on 2018 to present FXBBS, FLFBS, FLHCS, FXBRS, FXFBS and FXLRS

770411 Hex socket button head

Set of five screws for the stock round air cleaner cover on 2018 to present FLFB, FLFB, FXBB and FXFB

770412 Hex socket button head

S&S AIR CLEANER ADAPTER

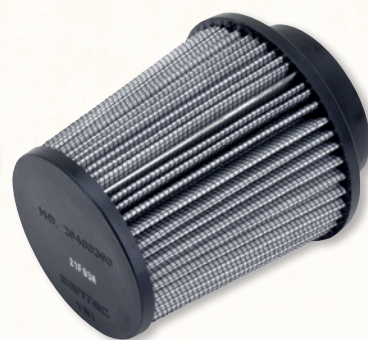


NEW *SCREWS FOR BIKES*

This trick adapter makes it possible to fit an air cleaner designed for an S&S Super E or Super G carburetor to a Keihin CV carburetor as stock on 1997-2002 Buell, 1988-2006 Evolution Sportster, 1990-2000 Evolution Big Twin and 1999-2006 Twin Cam or the throttle body of a cable operated Delphi Fuel Injection as on 2002-2017 Twin Cam and 2007-2022 XL Sportster.

795094 Adapter for Super E/G air cleaner to Keihin CV or cable operated Delphi EFI

STOCK AIR FILTER ELEMENT FOR PAN AMERICA AND RH SPORTSTER



NEW

Stock replacement filter element is exactly made to factory specifications.

Fits 2021 to present RA1250 & RA1250S Pan America, 2021 to present RH1250 Sportster S and 2022 to present RA975 & RA975S Nightster

781669 Air filter element (OEM 29400390)

CHROME ALLEN HEAD OIL PUMP AND TAPPET SCREEN PLUG SET



NEW *MIDWEST ACORN NUT CO. CROWN CYCLONE THE ULTIMATE QUALITY TWO WOOD REGISTERED*

Top quality smooth chrome Allen head plugs for the tappet screen, oil pump check valve and relief valve with the required O-rings in a convenient kit.

233163 1970-1980 Big Twin

233164 1981-1999 Big Twin, set of 3

TAPPET OIL SCREEN KITS

NEW *Colony*



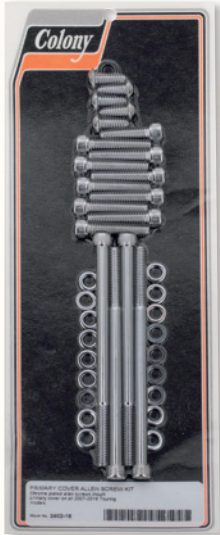
The right oil screen with the right spring or O-ring for your application in a convenient kit.

735013 Fits 1966-1969 Shovelhead Big Twin (OEM 24981-66 + 24982-66)

735011 Fits 1970-1984 Shovelhead and 1984-2000 Evolution Big Twin (OEM 24981-70 + 24982-70)

735012 Fits 2000-2017 Twin Cam Softail (OEM 24983-00 + 11301)

PRIMARY, DERBY & INSPECTION COVER SCREW KITS



NEW Colony MIDWEST ACORN NUT CO. THE ULTIMATE QUALITY 100% MADE IN THE USA

Top quality chrome plated screws in convenient kits. Allen heads are also known as hex socket cap screws.

- 235054** Fits 1991-2003 Sportster, knurled Allen and oval heads, Midwest Acorn
- 235055** Fits 1991-2003 Sportster, smooth Allen and oval heads, Midwest Acorn
- 742379** Fits 1936-1964 Big Twin, knurled Allen and slotted panheads, Colony
- 233169** Fits 1965-1986 4-Speed Big Twin, knurled Allen and countersunk heads, Midwest Acorn
- 742384** Fits 1971-1986 4-speed Big Twin, knurled Allen and countersunk heads, Colony
- 742519** Fits 1980-1984 5-speed Big Twin, knurled Allen heads, Colony
- 742359** Fits 1985-2000 FXR and 1985-1998 Touring, knurled Allen heads, Colony
- 239913** Fits 1995-2006 Softail and 1995-2005 Dyna, knurled Allen heads with washers, Midwest Acorn
- 743292** Fits 1989-2006 Softail and 1991-2005 Dyna, knurled Allen heads with washers, Colony
- 743443** Fits 2006-2017 Dyna, knurled Allen heads, Colony
- 743409** Fits 1999-2006 Touring, knurled Allen heads, Colony
- 743469** Fits 2007-2016 Touring, 2009-2016 Trike, 2008-2011 FXCW & FXCWC Rocker and 2014-2017 FXSB Breakout, knurled Allen heads, Colony
- 743444** Fits 2007 to present Softail, 2017 to present Touring and 2017 to present Trike, knurled Allen heads, Colony

BLACK STAINLESS STEEL PRIMARY COVER SCREWS



NEW SCREWS & NUTS

Stainless steel screws with matt black powder coated heads are the finishing touch for your bike. Kits include all screws for the outer primary cover.

- 770470** Fits the primary cover on all 1991-2003 Sportster
- 770471** Fits the primary cover on 2004-2022 XL Sportster and 2008-2013 XR1200 Sportster
- 770476** Fits the primary cover on 2021 to present RA Pan America and 2021 to present RH Sportster
- 770466** Fits the primary cover on 1970-1984 Big Twin
- 770472** Fits the primary cover on 1985-1998 Touring
- 770473** Fits the primary cover on 1999-2006 Touring
- 770474** Fits the primary cover on 2007-2016 Touring and 2009-2016 Trike
- 770467** Fits the primary cover on 1989-2000 FXR, 1989-1999 Softail and 1991-1998 Dyna
- 770468** Fits the primary cover on 1999-2006 Softail and 1999-2005 Dyna
- 770469** Fits the primary cover on 2007-2017 Softail and 2006-2017 Dyna
- 770475** Fits the primary cover on 2008-2011 Rocker and 2013-2017 Breakout

BLACK STAINLESS STEEL DERBY COVER SCREWS



NEW SCREWS & NUTS

Stainless steel screws with matt black powder coated heads are the finishing touch for your bike.

- 770433** Set of six screws for the stock derby cover on 2004-2022 XL Sportster and 2008-2013 XR1200 Sportster
- 770456** Set of five screws for the stock derby cover on 1999 to present Touring, 2009 to present Trike, 1999-2017 Dyna, 1999 Evolution Softail, 2000-2017 Twin Cam Softail and 2018 Milwaukee Eight Softail
- 770419** Set of five screws for the stock derby cover on 2019 to present Milwaukee Eight Softail

ENGINE SPROCKET SPACERS



For perfect alignment of the primary drive train.

Fits 1970-2006 4- & 5-Speed Big Twin Available in a set of 6 different sizes or in separate size 5 pack

- 231763** Assortment 6 pack (one each size), Eastern
- 761094** **NEW** Assortment with one of each .020", .030", .050", .075" and .100", BDL
- 233489** 5 pack .060" (OEM 24032-70), Bender Cycle
- 233498** 5 pack .090" (OEM 24033-70), Bender Cycle
- 233499** 5 pack .120" (OEM 24034-70), Bender Cycle
- 233500** 5 pack .150" (OEM 24035-70), Bender Cycle
- 233501** 5 pack .180" (OEM 24036-70), Bender Cycle
- 233502** 5 pack .210" (OEM 24037-70), Bender Cycle

Fits 2006 Dyna, 2007-2017 Twin Cam & 2017 to present Milwaukee Eight

- 232193** Assortment 5-pack, one of each .020", .030", .050", .075" and .100" thick, BDL

BLACK STAINLESS MIRROR NUT KIT



NEW SCREWS & NUTS

Set of two black powder coated stainless steel 5/16-24 UNF acorn nuts and spring washers for all handlebar mounted mirrors on 1982 to present Harley-Davidson Big Twin, FXR, Softail, Dyna, Touring and XL & XR Sportster. Can also be used to replace OEM 7331 chrome acorn nuts.

- 770458** Black acorn nut kit for mirrors

BLACK STAINLESS STEEL TRANSMISSION TOP COVER SCREWS



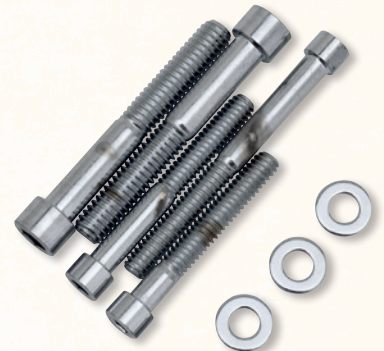
NEW SCREWS & NUTS

Stainless steel screws with matt black powder coated heads are the finishing touch for your bike. Kits include all screws for the transmission top cover.

Fits all 2006-2017 Dyna, 2007 to present Softail, 2007 to present Touring and 2009 to present Trike

- 770488** Transmission top cover screw kit

SPROCKET COVER SCREW KITS FOR SPORTSTER



Colony

Chrome Allen head screws that hold the sprocket cover to the engine. Allen heads are also known as hex socket cap screws.

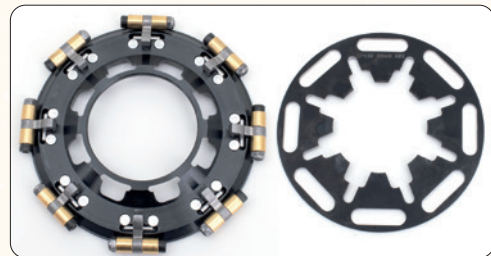
Fits 1986-2003 Sportster

- 235058** Knurled Allen sprocket cover and rear brake master cylinder screws, Midwest Acorn
- 235059** Smooth Allen sprocket cover and rear brake master cylinder screws, Midwest Acorn

Fits 2004-2022 XL Sportster

- 757569** **NEW** Knurled Allen sprocket cover screws, Colony

T.P.P. SUPER LIGHT WORKING PERFORMANCE CLUTCH FOR SPORTSTER



When you feel that it takes too much from your hand to pull the clutch the Variable Pressure Clutch (VPC) is the ultimate solution. The VPC gives you reduced spring pressure at idle, but when revving up the bob weights use centrifugal force to put more pressure on the clutch than you could ever achieve with a High Performance clutch spring. It makes for easy clutch lever work from idle to 3,000 RPM, the area where most people need to pull their clutch to shift gear.

Some Variable Pressure Clutch features:

- Centrifugal force on the bob weights works like a Lock Up clutch
- Reduces required clutch lever force up to 60% at idle on stock engines
- Improved clutch engagement when revving up
- Better clutch disengagement and feel
- Easier to find neutral
- Clutch pull becomes heavier when RPM increases
- Sportster kits fit 1991-1993 XL with a 1994-2003 primary cover, derby cover and clutch release mechanism
- Sportster 1200 kits fit 1994-2002 Buell S1, S2, S3 and X1 models
- You can install a stronger diaphragm spring when your performance needs grow

Fits 1994-2022 XL 883 Sportster with stock engine, gives 60% lever effort reduction in 1991-2003 models and 30% lever effort reduction in 2004-2022 models

712099 TPP Variable Pressure Clutch with 130lbs slotted style diaphragm spring

Fits 1994-2022 XL 883 Sportster with tuned engine, gives 55% lever effort reduction in 1991-2003 models and 20% lever effort reduction in 2004-2022 models

712098 TPP Variable Pressure Clutch with 150lbs slotted style diaphragm spring

Fits 1994-2022 XL 1200 Sportster with stock engine, gives 40% lever effort reduction in 1991-2003 models and 30% lever effort reduction in 2004-2022 models

712097 TPP Variable Pressure Clutch with 190lbs slotted style diaphragm spring

Fits 1994-2022 XL 1200 Sportster with mildly tuned engine. Gives 30% lever effort reduction in 1991-2003 models and 20% lever effort reduction in 2004-2022 models

712096 TPP Variable Pressure Clutch with 210lbs slotted style diaphragm spring

Fits 1994-2022 XL 1200 Sportster with highly tuned engine. Gives 38% lever effort reduction in 1991-2003 models and no lever effort reduction in 2004-2022 models.

712095 TPP Variable Pressure Clutch with 240lbs slotted style diaphragm spring

Fits 1991-2022 XL 1200 Sportster with 90-100HP. Gives 17% lever effort reduction in 1991-2003 models and 17% lever effort increase in 2004-2022 models

712094 TPP Variable Pressure Clutch with 280lbs slotted style diaphragm spring

Fits 1991-2022 XL 1200 Sportster with more than 100HP. Gives no lever effort reduction in 1991-2003 models and 38% lever effort increase in 2004-2022 models

712093 TPP Variable Pressure Clutch with 340lbs slotted style diaphragm spring

Replacement parts

712148 Variable pressure clutch only, use with with slotted style diaphragm spring

712149 Diaphragm spring, slotted style, 130lbs

712122 Diaphragm spring for ZPN 712106, 712121, 712124, 712125, 712129, 712131 and 712139 TPP-VPC clutches, 150lbs

712150 Diaphragm spring, slotted style, 150lbs

712123 Diaphragm spring for ZPN 712106, 712121, 712124, 712125, 712129, 712131 and 712139 TPP-VPC clutches, 190lbs

712151 Diaphragm spring as used in ZPN 712097, slotted style, 190lbs

712152 Diaphragm spring as used in ZPN 712096, slotted style, 210lbs

T.P.P. SUPER LIGHT WORKING PERFORMANCE CLUTCH FOR 1990-1997 BIG TWIN



When you feel that it takes too much from your hand to pull the clutch the Variable Pressure Clutch (VPC) is the ultimate solution. The VPC gives you reduced spring pressure at idle, but when revving up the bob weights use centrifugal force to put more pressure on the clutch than you could ever achieve with a High Performance clutch spring. It makes for easy clutch lever work from idle to 3,000 RPM, the area where most people need to pull their clutch to shift gear.

Some Variable Pressure Clutch features:

- Works with stock clutch basket, hub, friction and pressure plates
- Centrifugal force on the bob weights works like a Lock Up clutch
- Reduces required clutch lever force up to 40% at idle on stock engines
- Improved clutch engagement when revving up
- Better clutch disengagement and feel
- Easier to find neutral
- Installation requires a clutch spring compressor ZPN 210080 (OEM 38515-90) and removal and re-installation of the primary cover
- 1990-1993 Touring & FXR may require removal of some material from the inside of the primary cover
- Clutch pull becomes heavier when RPM increases
- Install a stronger diaphragm spring when your performance needs grow

Fits all 1990-1997 Dyna, FXR, Softail and Touring with stock engine, gives 40% lever effort reduction

712095 TPP Variable Pressure Clutch with 240lbs slotted style diaphragm spring

Fits all 1990-1997 Dyna, FXR, Softail and Touring with mildly tuned engine, gives 20% lever effort reduction

712094 TPP Variable Pressure Clutch with 280lbs slotted style diaphragm spring

Fits all 1990-1997 Dyna, FXR, Softail and Touring with highly tuned engine, gives no lever effort reduction

712093 TPP Variable Pressure Clutch with 340lbs slotted style diaphragm spring

Replacement parts

712153 Diaphragm spring as used in ZPN 712095, slotted style, 240lbs

712154 Diaphragm spring as used in ZPN 712094, slotted style, 280lbs

712155 Diaphragm spring as used in ZPN 712093, slotted style, 340lbs

712148 Variable pressure clutch only, use with with slotted style diaphragm spring

712123 Diaphragm spring for ZPN 712108 and 712106 TPP-VPC clutches supplied before October 2023, 190lbs

COMPETITION MASTER CLUTCH KITS FOR MILWAUKEE EIGHT



American Prime Manufacturing was founded in 2018 by industry veteran Ben Kudon. This company prides itself on providing three things everyday: Performance, Quality and Service. Their Competition Master Clutch kits bolt straight into the OEM clutch basket and give you a clutch that is capable to take every foot-pound or Newton you can get out of your V-Twin. All American Prime parts are fully interchangeable with Rivera Primo parts of the same type and application. Consequently, a Competition Master clutch is the perfect alternative for a Pro-Clutch.

Fits 2017-2020 Milwaukee Eight Touring and Trike with hydraulic clutch control

761039 Competition Master clutch kit

Fits 2018 to present Milwaukee Eight Softail, Touring and Trike with cable operated clutch

761040 Competition Master clutch kit

REBUILD KIT FOR TRIKE 6-PISTON CALIPERS



We can not cross reference these parts to OEM part numbers as.... Harley does only supply complete calipers! Kit contains parts for two front brake calipers.

Fits 2014-2018 FLHTCUTG Tri Glide Ultra Classic and 2015-2018 FLRT Freewheeler

747627 Kit with six pistons, six caliper seals, six piston seals and six piston dust seals

1987-1999 REAR CALIPER MOUNT KIT



Caliper hardware as used on late 1987-1999 Touring, FXR, Softail, Sportster and 1991-1999 Dyna.

148207 Kit with two OEM style hex head chrome caliper guide pins (OEM 44039-86), two caliper guide bushings (OEM 44035-86) and a piston seal (OEM 44152-77), Genuine Zodiac

789296 Kit with two Torx head chrome caliper guide pins (OEM 44039-86), two caliper guide bushings (OEM 44035-86) and a piston seal (OEM 44152-77), V-Twin Mfg.

789295 Kit with two Torx head black caliper guide pins (OEM 44039-86), two caliper guide bushings (OEM 44035-86) and a piston seal (OEM 44152-77), V-Twin Mfg.

BLACK TITANIUM CALIPER BOLTS



Screws made from 6AL-4V Grade 5 Titanium with rolled threads. They have matt black powder coated heads to bolt calipers to the front fork. Order two sets for dual disc applications.

Fits 2006-2017 V-Rod, 2008 to present Touring, 2009-2013 Trike, 2019 to present Trike

770462 Set with two 12-point screws (OEM 44160-00)

Fits 2000-2003 Sportster, 2002-2005 V-Rod, 2000-2017 Dyna, 2000-2015 Softail, 2000-2007 Touring, 2014-2018 Trike

770463 Set with one short and one long 12-point screws (OEM 44160-00 & 44163-00)

DISC ADAPTERS



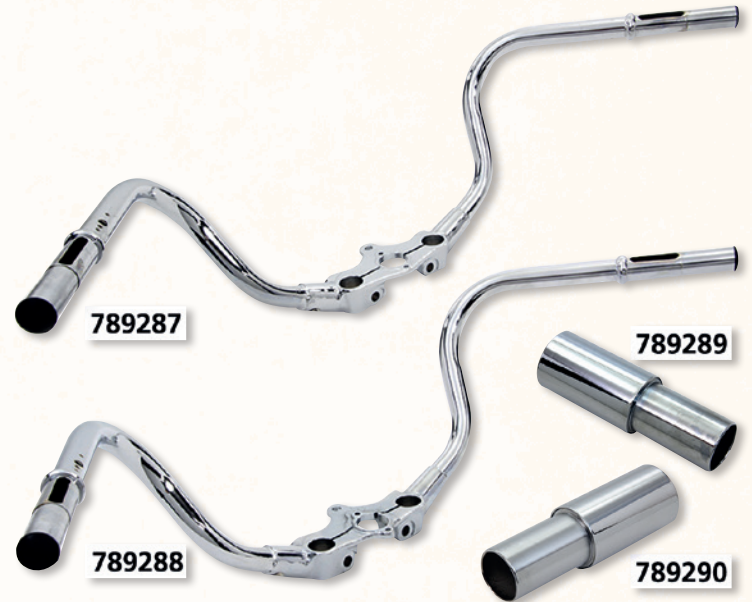
These adapter rings allow you to fit 2000 and later style disc brake rotors with their 2.22" (56.4mm) inner diameter on 1984-1999 style wheels with a 2" (50.8mm) register. Sold each.

144107 **NEW** Disc brake rotor to hub adapter with cut out for speedo drive, Genuine Zodiac

752255 Disc brake rotor to hub adapter with cut out for speedo drive, Performance Machine

752256 Disc brake rotor to hub adapter, Performance Machine

STELLING & HELLING SPEEDSTER HANDLEBARS FOR SPRINGER FORKS



Jack Tracey, life-long member and President of the world's oldest motorcycle club, the Yonkers Motorcycle Club and owner of the Harley-Davidson dealership in Yonkers (NY) asked Stelling & Helling to develop handlebars taller than the original "comfortable" Speedster bars. S&H came up with these ones with horn and dimmer switch mount holes on the left side and a shortened grip area for use with the short Helling type spirals. These bars are made for in-line Springer forks with the outer holes measuring 4 3/4" (120.7mm) center to center and come complete with parkerized end plugs. Order pinch bolts and two short spirals separately. Grips must be cut to length for this installation. "In-line" forks were originally made for 1936-1940 Big Twin with 28° frame neck, 1941-1945 Big Twin with 29° frame neck, 1929-1957 45CI Solo and 1937-1957 Servicar. Offset forks were stock on

1946-1948 EL and FL Big Twin with the 30° frame neck as well as most reproduction rigid frames with stock 30° neck.

4" (10cm) rise S&H Speedster handlebars
A=10cm, B=7.5cm, C=85cm, D=32cm, F=15cm

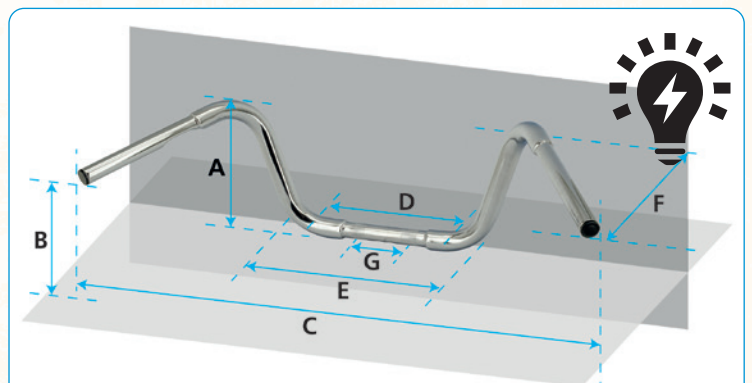
789287 Chrome for 1929-1957 style in-line Springer forks

789288 Chrome for 1946-1948 offset Springer forks

Matching S&H short spirals

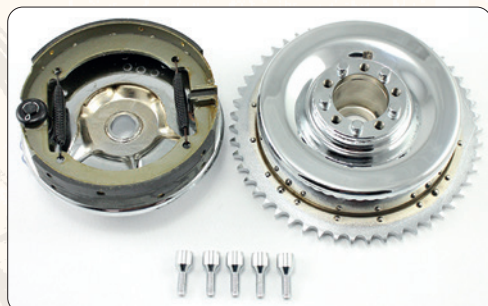
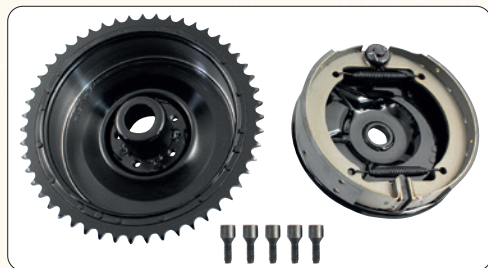
789289 Push type short spiral (short version of OEM 56245-35 & 3312-35)

789290 Pull type short spiral (short version of OEM 56246-35 & 3312-35A)



Note: **A.** Rise **B.** End Rise **C.** Width **D.** Center Width **E.** Base Width **F.** Pull Back **G.** Knurl (center-to-center)

COMPLETE REAR DRUM BRAKE KITS FOR VINTAGE BIG TWIN



Drum brake kits with installed chain sprocket and dust ring, backing plate with shoes, springs, pivot stud and brake cam. Unlike stock the drums are not cast but deep-drawn from steel to improve service life.

Fits 1936-1940 EL Big Twin, 1941-1957 FL Big Twin and 1937-1948 UL Big Twin

734940 Rear brake kit, black

734941 Rear brake kit, chrome

HARDTAIL CONVERSION FOR 1958-1984 4-SPEED BIG TWIN



A duplicate from the rear section of an original rigid frame, adapted to weld onto a stock 1958-1984 FL or FX swingarm style frame. This hardtail has 7/8" rear axle slots and includes rear transmission mount, tool box bracket, fender cross brace, seat post top yoke, and two dowel pins to connect the lower frame tubes. Installer must weld lower tube inserts and top seat post yoke assembly in place. Transmission height shimming may be required.

789299 Weld-on hardtail section for 1958-1984 4-speed Big Twin

MAGNUS CONVERSION FOR TOURING BY TOMMY & SONS



TOMMY & SONS

A complete conversion for all 2009-2013 or 2014 to present Touring. Made from high quality fiberglass with a white gel coat surface, ready for your painter's preparation. Saddlebag bodies take stock lids, latches and hardware. Side covers fit only with the Magnus tank shroud kit.

Fits 2009-2013 Touring

761153 Magnus tank shroud kit

761154 Magnus gas tank console

761197 Smooth black custom gas cap for Tommy & Sons gas tank console

761198 Diamond black custom gas cap for Tommy & Sons gas tank console

761156 Magnus stretched side covers

761162 Magnus 1998-2013 style 7" stretched saddlebag bodies

761161 Magnus rear fender

Fits 2014 to present Touring

761153 Magnus tank shroud kit

761154 Magnus gas tank console

761197 Smooth black custom gas cap for Tommy & Sons gas tank console

761198 Diamond black custom gas cap for Tommy & Sons gas tank console

761157 Magnus stretched side covers

761160 Magnus rear fender

761163 Magnus 2014 to present style 7" stretched saddlebag bodies



BLACK STAINLESS STEEL BRAKE AND CLUTCH CONTROL MOUNT KIT FOR SPORTSTER



Stainless steel screws with matt black powder coated heads to bolt the clamps to the brake and clutch levers.

Fits all 2004-2022 Sportster

770422 Set with four Torx button head screws and four washers (OEM 42425-05)

SCREW KIT FOR 1996-UP HANDLEBAR CONTROLS AND SWITCH HOUSINGS



Colony

Kit with top quality chrome screws for the master cylinder cover and switch housings, as well as chrome screws with washers for the clutch and brake lever clamps.

Fits 1996-2010 Softail, 1996-2007 Touring, 1996-2011 Dyna, 1996-2003 Sportster and 2002-2005 V-Rod

239373 Chrome screw & washer kit, handlebar controls and switch housings, Midwest Acorn

789683 Chrome screw kit, handlebar controls and switch housings, Colony

BLACK STAINLESS STEEL HANDLEBAR TOP CLAMP SCREW



Stainless steel screws with matt black powder coated heads to bolt the handlebar top clamp to the risers.

Fits 2008-2011 Rocker and 2007 to present Fat Boy

770447 Set with four 3/8-16 X 1-1/2" UNC hex socket cap screws (OEM 4350A)

Fits 2001-2007 Deuce, 2005 to present Deluxe, 2007-2009 Softail Custom, 2007 to present Heritage Classic, 2018-2020 Low Rider and 2012-2021 Slim

770448 Set with four 5/16-18 X 7/8" UNC hex head screws (OEM 3494A)

Fits 2013-2017 Breakout, 2007-2017 Street Bob, 2007-2015 Super Glide Custom, 2007-2017 FXDWG Dyna Wide Glide, 2006-2017 Low Rider, 2009-2017 Fat Bob, 2012-2016 Switchback, 2004-2022 Sportster Custom, Roadster, Forty-Eight and Seventy-Two, 2010-2013 Low, SuperLow and 2017-2022 Iron

770449 Set with four 5/16-18 X 1 1/4" UNC hex socket cap screws (OEM 3210A)

Fits 1991 FXDB Sturgis, 1992 FXDB Daytona, 1993-1998 Low Rider, 1994-2006 Super Glide, Super Glide Custom, Super Glide Sport and T-Sport, 1993-1998 FXDWG Dyna Wide Glide, 1990-2003 Sportster Standard, Custom, Deluxe, Hugger, Sport, 2002-2015 883R, 2009-2016 Iron, 2007-2012 Nightster, 2005-2009 883 Low, 2007-2010 XR1200 and 2010-2013 XR1200X

770450 Set with two 5/16-18 X 1-1/2" UNC and two 5/16-18x2" UNC hex socket cap screws (OEM 4326A & 4816A)

Fits 1986-1998 Softail Custom, 1999-2006 FXDWG Dyna Wide Glide, 2018 to present Breakout, 2018 to present Fat Bob, 2018 to present Fat Boy, 2000-2010 Heritage and Heritage Classic, 1999-2005 Low Rider, 1999-2009 Night Train, 2018 to present Sport Glide, 2000-2015 Softail Standard, 2018 to present Street Bob

770451 Set with four 5/16-18 X 1 1/2" UNC hex socket cap screws (OEM 4816A)

Fits 2021 to present RA1250 & RA1250S Pan America, 2021 to present RH1250S Sportster S and 2022 to present RH975 & RH975S Nightster

770441 Set with four M8x30 Torx cap screws (OEM 10201022)

BLACK STAINLESS STEEL BAR END SCREWS FOR RH SPORTSTER



Stainless steel screws with matt black powder coated heads to bolt the bar end caps to the handlebars.

Fits 2021 to present Sportster S and 2022 to present Nightster and Nightster Special

770444 Set with two Torx cylinder head screws (OEM 10201022)

BLACK STAINLESS STEEL FOOT PEG SCREWS



Stainless steel screws with matt black powder coated heads are the finishing touch for your bike.

Fits all 2004-2022 XL Sportster

770426 Set of four hex socket head screws to bolt the driver peg mounts to the frame

Fits all 2018 to present Softail

770401 Set of four hex socket head screws to bolt the driver peg mounts to the frame

Fits all standard male mount foot pegs applications

770459 Set of two hex socket button head foot peg pivot screws with washers and acorn nuts

Accessories

770508 Anti-Seize compound for Stainless Steel screws, 90 gram tube

BLACK STAINLESS STEEL CHIN SPOILER SCREW KITS



Stainless steel screws with matt black powder coated heads are the finishing touch for your bike.

Fits all 2021 RH1250S Sportster S

770442 Set of eleven flanged hex socket button head screws and washers

Fits 2022 to present RH975 & RH975S Nightster

770443 Set of nine flanged hex socket button head screws and washers

Accessories

770508 Anti-Seize compound for Stainless Steel screws, 90 gram tube

MILWAUKEE EIGHT SOFTAIL SIDE COVER SCREW KITS



Stainless steel screws with matt black powder coated heads are the finishing touch for your bike. Kit includes screws for the left and right frame side cover.

Fits all 2018 to present Milwaukee Eight Softail

770402 Set of three hex socket button head screws

Accessories

770508 Anti-Seize compound for Stainless Steel screws, 90 gram tube

BLACK STAINLESS STEEL FRONT FENDER SCREW KITS



Stainless steel screws with matt black powder coated heads are the finishing touch for your bike.

Fits 1984-2003 Sportster, 1984-2000 FXR and 1991 2005 Dyna with 39mm front fork

770432 Set of four 5/16-18x1.25" UNC hex socket cap screws

Fits 2022 to present RH975 Nightster Sportster

770440 Set of four hex socket cap screws

Fits 2021 to present RH1250S Sportster S

770439 Set of four long and four short hex socket button head screws with washers

Fits 2004-2022 Sportster Standard, Custom, Roadster, Low, SuperLow, Iron, Nightster, Seventy-Two

770431 Set of four hex socket button head screws with washers

Fits the fork brace on 2010-2022 Sportster Forty-Eight

770430 Set of four 5/16-18x1.5" UNC hex socket cap screws

Fits 2006-2017 Dyna

770413 Set of four hex socket cap screws

Fits 2018 to present FLDE, FLFB, FLFBS, FLHC, FLHCS and FLSL

770415 Set of four hex socket cap screws

Fits 2018 to present FLDE, FLFB, FLFBS, FLHC, FLHCS and FLSL

770415 Set of four hex socket cap screws

Fits 2018 to present FXBB & FXBBS Street Bob, FXLR Low Rider and FXST Standard

770413 Set of four hex socket cap screws

Fits 2018 to present FXBR & FXBRS Breakout

770414 Set of four hex socket head screws with washers

Fits 2020 to present FXLRS Low Rider S, FXLRST Low Rider ST and FXRST Low Rider "El Diablo"

770416 Set of four hex socket button head screws with washers

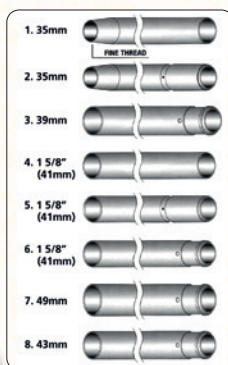
Fits 2018 to present FXFB & FXFBS Fat Bob

770417 Set of four hex socket cap screws

Accessories

770508 Anti-Seize compound for Stainless Steel screws, 90 gram tube

AMERICAN MADE HARD COATED FORK TUBES



Fork tubes for most 1949 to present Harley-Davidson in stock, under stock and over stock length.

- Hard chrome is not as bright as show chrome, but the hardness of 55-60 Rockwell provides longer lasting corrosion resistance and less drag and seal wear
- Ultra chrome is as bright as show chrome but has all the advantages of hard chrome
- DLC black is a diamond-like carbon coating, and is a nano-composite coating that has unique properties of natural diamond low friction, high hardness, and high corrosion resistance
- TNC Gold is a Titanium Nitride Coating, which is an extremely hard ceramic coating

Over stock length fork tubes come complete with spring spacers where required, but it is strongly recommended to check fender to lower triple tree and wheel to engine and wheel to controls clearances when fitting longer or shorter fork legs. Fork tubes are sold in pairs.

Fits 35mm Kayaba forks

1973-1975 FX and 1973-1974 Sportster, stock length 23 1/2"

Style 1

Hard chrome	Ultra chrome	DLC Black	TNC Gold	
-	770640	-	-	21 1/2" length (546mm)
-	770641	-	-	23 1/2" length (597mm) (OEM 45977-73)
-	770642	-	-	25 1/2" length (648mm)
-	770643	-	-	27 1/2" length (699mm)
-	770644	-	-	29 1/2" length (749mm)
-	770645	-	-	31 1/2" length (800mm)
-	770646	-	-	33 1/2" length (851mm)

Fits 35mm Showa forks

1976-1983 FX, FXE, FXB, FXEF, FXS models and all 1975-1983 Sportster, stock length 23 1/4"

Style 2

Hard chrome	Ultra chrome	DLC Black	TNC Gold	
-	770647	-	-	21 1/4" length (540mm)
-	770648	-	-	23 1/4" length (591mm) (OEM 45407-75)
-	770649	-	-	25 1/4" length (641mm)
-	770650	-	-	27 1/4" length (692mm)
-	770651	-	-	29 1/4" length (743mm)
-	770652	-	-	31 1/4" length (794mm)
-	770653	-	-	33 1/4" length (845mm)

Fits 35mm Showa forks

1984-1986 FX, FXR and Sportster, stock length, 23 1/2"

1984-early 1986 FXRT & FXRD and 1985 FXSB stock length 25 1/2"

Style 2

Hard chrome	Ultra chrome	DLC Black	TNC Gold	
-	770654	-	-	21 1/2" length (546mm)
-	770655	-	-	23 1/2" length (597mm) (OEM 45407-83)
-	770656	-	-	25 1/2" length (648mm) (OEM 45392-83)
-	770657	-	-	27 1/2" length (699mm)
-	770658	-	-	29 1/2" length (749mm)
-	770659	-	-	31 1/2" length (800mm)
-	770660	-	-	33 1/2" length (851mm)

Fits 39mm forks

1988-1989 XLH883C & XL1200C, 1990-1993 XL883C & XL1200C, 1988-1993 XL883DLX 1988-1994 FXR, 1988-1992 FXRS, 1987-1994 FXLR and FXRS-SP, 1987-1992 FXRT, 1988-1994 FXR

Stock length is 26 1/4" (OEM 45381-87)

1986-1987 XL883C, 1986-1987 XLH1100

1986-1987 FXR, 1986-1987 FXRS

Stock length is 24 1/4" (OEM 45407-86)

Can be used for 1992-2022 Sportster and 1991-2006 Dyna when installed in conjunction with ZPN 781147 damper tubes

Style 3

Hard chrome	Ultra chrome	DLC Black	TNC Gold	
748693	770661	-	-	22 1/4" (565mm) length
748694	770662	770696	748780	24 1/4" (616mm) length (OEM 45407-86)
-	770663	770697	752919	25 1/4" (641mm) length
748695	770664	770698	748781	26 1/4" (667mm) length (OEM 45381-87)
748696	770665	770699	748782	28 1/4" (718mm) length
748697	770666	-	-	30 1/4" (768mm) length
748698	770667	-	-	32 1/4" (819mm) length
-	770668	-	-	34 1/4" (870mm) length
-	770669	-	-	36 1/4" (921mm) length

Fits 41mm forks 1949-1976

1949-1976 FL, stock length 20 1/2"

Style 4

Hard chrome	Ultra chrome	DLC Black	TNC Gold	
-	770600	-	-	20 1/2" length (521mm) (OEM 45950-48)
-	770601	-	-	22 1/2" length (572mm)
-	770602	-	-	24 1/2" length (622mm)
-	770603	-	-	26 1/2" length (673mm)
-	770604	-	-	28 1/2" length (724mm)
-	770605	-	-	30 1/2" length (775mm)

Fits 41mm forks

1977-1983 FL & FLH, 1980-1983 FLT & FLHT, stock length 20 3/4"

Style 5

Hard chrome	Ultra chrome	DLC Black	TNC Gold	
-	770606	-	-	20 3/4" length (527mm) (OEM 45825-77A)
-	770607	-	-	22 3/4" length (578mm)
-	770608	-	-	24 3/4" length (629mm)
-	770609	-	-	26 3/4" length (680mm)
-	770610	-	-	28 3/4" length (730mm)
-	770611	-	-	30 3/4" length (781mm)
-	770612	-	-	32 3/4" length (832mm)

Fits 41mm forks

1980-1984 FXWG and FXDG, stock length 24 3/4"

Style 5

Hard chrome	Ultra chrome	DLC Black	TNC Gold	
-	770613	-	-	20 3/4" length (527mm)
-	770614	-	-	22 3/4" length (578mm)
-	770615	-	-	24 3/4" length (629mm) (OEM 45417-80)
-	770616	-	-	26 3/4" length (680mm)
-	770617	-	-	28 3/4" length (730mm)
-	770618	-	-	30 3/4" length (781mm)

Fits 41mm forks 1984-1999

1984-1999 Touring. Stock length is 20 1/4" (OEM 45827-84)

Can also be used in 1984-1999 FXST and 1993-1999 FXDWG. Stock length is 24 7/8" (OEM 45417-84), so will slightly lower or raise the front

Style 6

Hard chrome	Ultra chrome	DLC Black	TNC Gold	
748687	770619	-	-	20 1/4" (514mm) length (OEM 45827-84)
748688	770620	-	-	22 1/4" (565mm) length
748689	770621	-	-	24 1/4" (616mm) length
748690	770622	-	-	26 1/4" (667mm) length
748691	770623	-	-	28 1/4" (718mm) length
748692	770624	-	-	30 1/4" (768mm) length
-	770625	-	-	32 1/4" (819mm) length
-	770626	-	-	34 1/4" (870mm) length
-	770627	-	-	36 1/4" (921mm) length
-	770628	-	-	38 1/4" (972mm) length
-	770629	-	-	40 1/4" (1022mm) length

Fits 41mm forks

1997-2005 Touring and 2006-2008 FLHR & FLHRC. Stock length is 20 1/4"

(OEM 45890-97)

2000-2017 FLST models, Stock length is 22 7/8" (OEM 45930-00) 2000 FXDS-CONV, 2000-2005 FXDWG and 2000-2015 FXST, FXSTB, FXSTC & FXSTD. Stock length is 24 1/4" (OEM 45417-00)

Style 6

Hard chrome	Ultra chrome	DLC Black	TNC Gold	
748699	770630	770700	748783	20 1/4" length (OEM 45890-97)
748700	770631	770701	748784	22 1/4 (565mm) length (recommended stock replacement length for FLST, 5/8" (16mm) shorter than stock)
748701	770632	770702	748785	24 1/4" (616mm) length (OEM 45417-00)
748702	770633	-	-	26 1/4" (667mm) length
748703	770634	-	-	28 1/4" (768mm) length
748704	770635	-	-	30 1/4" (768mm) length
-	770636	-	-	32 1/4" (819mm) length
-	770637	-	-	34 1/4" (870mm) length
-	770638	-	-	36 1/4" (921mm) length
-	770639	-	-	38 1/4" (972mm) length

Fits 43mm inverted forks

2018-2021 FLSB Sport Glide

2018-2020 FXDRS

2009-2017 VRSCF V-Rod Muscle

2016-2020 XL1200CX Roadster

Style 8

Hard chrome	Ultra chrome	DLC Black	TNC Gold	
748986	770691	770703	748987	22 1/2" (571mm) left, 22 1/4" (565mm) right
-	770692	770704	752920	24 1/2" (622mm) left, 24 1/4" (616mm) right
-	770693	770705	752921	26 1/2" (673mm) left, 26 1/4" (667mm) right

Fits 43mm inverted forks

2018 to present FXFB & FXFBS Fat Bob

2020 to present FXLRS & FXLRST Low Rider S & ST

Style 8

Hard chrome	Ultra chrome	DLC Black	TNC Gold	
748984	770688	-	-	23" (584mm) left, 22 3/4" (578mm) right
-	770689	-	-	25" (635mm) left, 24 3/4" (629mm) right
-	770690	-	-	27" (686mm) left, 26 3/4" (679mm) right

Fits 49mm forks

2016-2022 XL1200X & XL1200XS Forty Eight

Style 7

Hard chrome	Ultra chrome	DLC Black	TNC Gold	
748994	770685	770719	748997	24 1/2" (622mm) length (OEM 45500295)
748995	770686	770720	748998	26 1/2" (673mm) length
748996	770687	770721	-	28 1/2" (724mm) length

Fits 49mm forks

2006-2017 FXD, FXDB, FXDC & FXDL (OEM 46605-06)

2006-2008 FXDWG (OEM 46617-06)

2010-2017 FXDWG (OEM 48862-10)

2014-2016 Touring. Stock length is 22.834" (OEM 45500113)

2013-2017 FXSB Breakout (OEM 45500151)

Style 7

Hard chrome	Ultra chrome	DLC Black	TNC Gold	
748681	770670	770706	748786	23 1/2" (597mm) length (recommended stock replacement length for 2014-2016 Touring, .666" longer than stock)
748682	770671	770707	748787	25 1/2" (648mm) length (OEM 46605-06, 45500151)
748683	770672	770708	748788	27 1/2" (699mm) length (OEM 46617-06)
748684	770673	770709	748789	29 1/2" (749mm) length
748685	770674	-	-	31 1/2" (800mm) length
-	770675	-	-	33 1/2" (851mm) length

Fits 49mm forks

2017 to present Touring

2017 to present Trike

Style 7

Hard chrome	Ultra chrome	DLC Black	TNC Gold	
748790	770682	770716	748793	22 7/8" (581mm) length (OEM 45500341, 45500114)
748791	770683	770717	748794	24 7/8" (632mm) length
748792	770684	770718	748795	26 7/8" (683mm) length

Fits 49mm forks

2018-2020 FLDE Deluxe (OEM 45500376)

2018 to present FLHC & FLHCS Heritage Classic (OEM 45500376)

2018 to present FLFB & FLFBS Fat Boy (OEM 45500460)

2018-2021 FLSL Slim (OEM 45500376)

2018 to present FXBB & FXBBS Fat Bob (OEM 45500376)

2018 to present FXBR & FXBRS Street Bob (OEM 45500376)

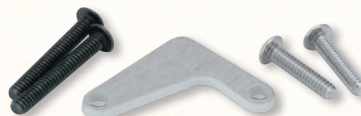
2018-2020 FXLR Low Rider (OEM 45500376)

2020 to present FXST Softail Standard (OEM 45500376)

Style 7

Hard chrome	Ultra chrome	DLC Black	TNC Gold	
748796	770676	770710	748799	23 3/4" (603mm) length (OEM 45500376)
748797	770679	770713	748982	23 7/8" (606mm) length (OEM 45500460)
748797	770677	770711	748977	25 3/4" (654mm) length
748980	770680	770714	748983	25 7/8" (657mm) length
748798	770678	770712	-	27 3/4" (705mm) length
748981	770681	770715	-	27 7/8" (708mm) length

JAGG THERMOSTATIC OFFSET OIL FILTER ADAPTERS



The Jagg offset oil filter adapter with thermostatic oil by-pass installs between the engine and oil filter for quick and easy installation of an oil cooler. The offset design is a must for all Twin Cams and Fuel Injected Evolution Big Twins but can also be used on other Evolution Big Twins and Evolution Sportsters. The oil filter adapter directs oil through the filter first for optimal flow characteristics. After filtration, the oil will by-pass the oil cooler until the engine reaches standard operating temperature. Then the thermostatic actuator will close the by-pass hole, sending hot, filtered oil to the oil cooler, and delivering cool, clean oil to the engine. The optional Anti-Rotation device will ensure that the oil filter adapter will not rotate during future oil filter removal.

Fits 1986-2022 XL Sportster, 1984-2000 Evolution Big Twin and 1999-2017 Twin Cam

740085 Billet aluminum offset oil filter adapter with thermostat

Service parts

740080 Gasket kit for offset oil filter adapters

740226 Thermostatic actuator rebuild kit

Accessories

740095 Anti Rotation device for Evolution Big Twin and Twin Cam

BLACK STAINLESS STEEL HEAD WASHER CUPS



Gloss black powder coated stainless steel washer and cup are a one-piece design and the icing on the cake for regular UNC and UNF hex and Torx socket cap screws.

770506 Head washer cups for 1/4" socket cap screws, 10-pack

770507 Head washer cups for 5/16" socket cap screws, 10-pack

FRONT FENDER 1987-2013 TOURING



NEW

Raw steel fender, requires drilling the holes for the fender trims for your application. It is strongly recommended to test-fit the fender before drilling holes and paint work.

Fits all 1987-2013 Touring and 2009-2013 Trike

770866 Front fender (OEM 59045-00B, 59087-00B, 59093-00B & 59093-87B)

STOCK STYLE FRONT FENDER FOR TOURING & TRIKE



NEW

Stock replacement raw steel fender has no trim holes as on FLHRXS, FLHX, FLHXS, FLTRU, FLTRX and FLTRXS. Installation on FLHR, FLHRC, FLHTCU, FLHTCUTG, FLHTK and FLHTKL requires drilling of the trim holes. It is strongly recommended to test-fit the fender before drilling holes and/or painting.

Fits 2014 to present Touring and 2014 to present Trike

770868 Front fender, raw steel (OEM 58900009, also replaces 58900032)

RICKS 21" & 23" FRONT FENDERS FOR MILWAUKEE EIGHT FAT BOY



NEW

RICK'S®
MOTORCYCLES

Made by Ricks in Germany out of 2mm sheet metal fenders are 3D laser cut with a tight fit over the tire. They come pre-drilled and unpainted. Fender and required mounting kit must be ordered separately.

Fits 2018 to present FLFB & FLFBS Fat Boy

770127 Steel front fender for 130/60-21 tire

770128 Steel front fender for 130/60-23 tire

770129 Mounting kit for 21" and 23" fenders

BLACK CVO STYLE LIGHTED REAR FENDER KIT FOR 2009-2013 TOURING



NEW

Painted in CVO gloss black stock replacement rear fender as on American domestic 2009-2013 CVO Touring. Comes complete with pre-wired led lighted saddlebag-to-fender fillers and license plate illumination. Also includes license plate mount and left and right frame covers. Note that lighting carries no approval marks.

Fits all 2009-2013 Touring

770867 Lighted rear fender kit, CVO black (OEM 60463-09A with 47502-09BDK, 47504-09BDK, 60465-09, 69383-09, 69407-09 and 70338-09)

BLACK CVO STYLE LIGHTED REAR FENDER KIT FOR 2014 TO PRESENT TOURING



NEW

Painted in CVO gloss black stock replacement rear fender as on selected American domestic 2014 to present CVO Touring. Comes complete with pre-wired led lighted run/tail/turn/brake saddlebag-to-fender fillers. Note that lighting carries no approval marks.

Fits all 2014 to present Touring

770869 Lighted rear fender kit, CVO black (OEM 60463-09A with 67800201, 67801344, 67801345, 67900233 and 69202629)

BLACK STAINLESS STEEL FENDER STRUT SCREW KITS



NEW

SCREWS & WASHERS

Stainless steel screws with matt black powder coated heads are the finishing touch for your bike.

Fits all 2004-2022 XL Sportster

770421 Set of eleven flanged hex socket button head screws and washers

Fits 2022 to present RH975 & RH975S Nightster

770445 Set of nine flanged hex socket button head screws and washers

Fits 2007-2017 Twin Cam Softail

770408 Set with four hex socket button head screws and washers to bolt the struts to the frame

770457 Set with six hex socket button head screws to bolt the fender to the struts

Fits 2018 to present Milwaukee Eight Softail

770409 Set with four long and four short hex socket button head screws and washers

Accessories

770508 Anti-Seize compound for Stainless Steel screws, 90 gram tube

BOBBED 3.5 GALLON HAND SHIFT GAS TANK FOR KNUCKLEHEAD



Bobbed 3.5 gallon (13.2 liter) 2-piece hand shift style tank set is ready to take a 3/8" NPT fuel valve and 1/8" NPT cross-over tube. Install with cam lock style gas caps and shifter guide for your application. Tank has no provision to mount emblems. As with the originals back in those days these tanks require hand fitting and shimming to give correct alignment for Skull or Cat-Eye dash, fuel line fitment and to achieve correct height. It is strongly recommended to test-fit before sealing and painting.

789265 Bobbed gas tank set, fits 1936-1939 EL

REPRODUCTION 3.5 GALLON HAND SHIFT GAS TANK FOR FL



V-Twin Mfg. reproduction of the long unavailable hand shift style 3.5 gallon (13.2 liter) tank set as used on the 1941-1946 OHV Big Twin. Takes original rod type shut-off valve, emblems and mounts, two vented cam style gas caps, cross over gas line and shifter guide. Has no provision to mount emblems. Requires hand fitting and shimming to give correct alignment for the Cat-Eye dash, fuel line fitment and to achieve correct height.

- 789266** **NEW** Bobbed gas tank set for 1941-1946 FL
- 745308** **NEW** Rod type shut-off valve, brass knob
- 745912** Rod type shut-off valve, chrome
- 011325** Chrome vented cam lock style gas cap, fine knurling (OEM 61103-36)
- 011326** Black vented cam lock style gas cap, fine knurling (OEM 61103-36)
- 011329** Chrome vented cam lock style gas cap, coarse knurling (OEM 61103-36)
- 011327** Black vented cam lock style gas cap, coarse knurling (OEM 61103-36)
- 758353** Crossover line, fits all 1940-1947 Big Twin, tin finish, V-Twin Mfg. (OEM 62355-40)
- 780081** Bolt with bushing for shifter hinge (OEM 33775-37)

ROADSTER GAS TANK FOR EFI XL SPORTSTER



Steel gas tank ready to take an Aero style gas cap with a 95mm outer diameter flange. Gas cap is not included but must be ordered separately. As with all gas tanks, do not grind or sand down seams or joints and test fit all parts on the bike before painting.

Fits 2007-2022 Fuel Injected XL Sportster

- 011526** Gas cap vented
- 749698** **NEW** Roadster gas tank, raw steel

SPORTSTER S BLACK STAINLESS STEEL FUEL CAP MOUNT KIT



Stainless steel screws with matt black powder coated heads to bolt the fuel cap assembly to the tank.

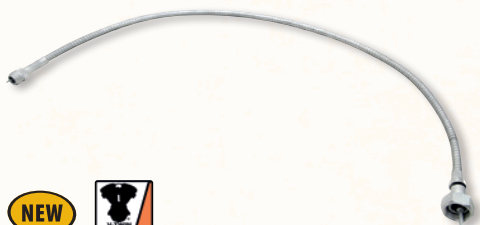
Fits all 2021 to present RH1250S Sportster S

- 770434** Set with six hex socket cap screws

Accessories

- 770508** Anti-Seize compound for Stainless Steel screws, 90 gram tube

OEM STYLE SPEEDO CABLES FOR 1936-1961 BIG TWIN



Replicas from the OEM transmission driven speedometer drive cables as on 1936-1940 EL, 1938-1948 UL and 1941-1961 FL. Cable is 35 1/2" (90cm) long, has a hex nut on the transmission side and a male fitting at the speedometer end. Works with OEM speedometers only, most aftermarket and replica speedometers are for use with a 5/8" speedometer nut. ZiCad is a dull shade of zinc that has an appearance close to that of a cadmium finish.

- 789280** Speedometer cable, white plated casing (OEM 67026-36A)
- 789281** Speedometer cable, ZiCad plated casing (OEM 67026-36A)

OIL TANK DRAIN PLUG



Colony

1/2-20 threaded as stock on 1981-1992 FLT and 1982-1985 FXR, as well as many aftermarket oil tanks

- 723116** **NEW** Zinc plated, 7/8" hex head, OEM 706A replica, Colony (OEM 60346-65, 60348-65B, 706A)
- 747133** Chrome domed 7/8" hex head with washer, Colony (OEM 60346-65, 60348-65B, 706A)
- 233583** **NEW** Magnetic hex head drain plug with washer (OEM 60348-65B)
- 720167** Zinc plated, 3/4 hex head with washer, Bender Cycle (OEM 60346-65, 60348-65B, 706A)

1/2-13 threaded, 1954-1957 K models, 1957-1978 Sportster

- 781260** Chrome replica hex head (OEM 707)
- 781261** White plated replica hex head (OEM 707)
- 747137** Chrome hex socket button head, Colony (OEM 707)

OIL FILTERS FOR RH SPORTSTER AND RA PAN AMERICA



Oil filter is made exactly to factory specifications.

Fits 2022 to present RH1250S Sportster S and RA1250 Pan America and 2023 to present RH975 Nightster

- 781670** Oil filter for Revolution Max engine (OEM 62700280)

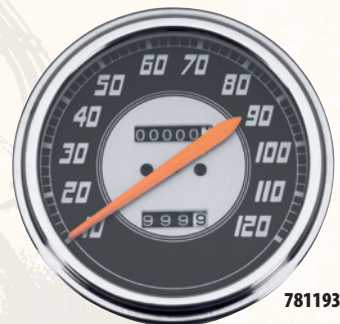
V-TWIN SPEEDOMETERS FOR FLATHEAD, SERVICAR & BIG TWIN



781191



789283



781193



789284



781194



789285



789282



789286



Replica speedometers with the right colors for the years listed. Scales are, like original, silk screened on glass. Speedometers feature a fitting for a speedometer drive cable with a 5/8" female nut like OEM 67026-62, are 2:1 ratio and come complete with trip reset knob.

Fits 1936-1961 Solo and Servicar 45CI, as well as 1936-1961 Big Twin

781191 Army face, scale 10-120 MPH

781193 Black face, scale 10-120 MPH with orange needle as on 1936-1947 models

781194 Black face, scale 10-120 MPH with white needle as on 1936-1947 models

789282 Gray scale with light gray digits 1-12, blue face, red needle as on 1948-1952 FL

789283 Dark gray scale with light gray digits 1-12, gold face, red needle as on 1953-1955 FL

789284 Red scale with white digits 1-12, gold face and red needle, 1955 Beck style

789285 Black scale with green digits 1-12, gold face and red needle as on 1956-1961 FL

789286 Black scale with green digits 10-120, gold face and red needle

1996-2013 BATWING FAIRING PARTS



Great for crash damage repairs, these parts come in raw black ABS. Require painting to get a perfect finish.



Fits 2008-2013 Electra Glide and 2009-2013 Trike. Can also be used to replace OEM 58497-96B on 1996-2007 Electra Glide and OEM 58199-08A on 2008-2013 Street Glide but requires modification of the gauge mounts

770858 **NEW** Inner fairing, black ABS (OEM 58497-08A)

Fits 1996-2013 Electra Glide, 2006-2013 Street Glide and 2009-2013 Trike

351565 Upper mounting brackets (OEM 58938-96C & 58939-96C)

351567 Lower mounting brackets (OEM 58478-96B & 58479-96B)

770859 **NEW** Outer fairing, gloss black ABS (OEM 58198-96, 58236-96)

2014-UP BATWING FAIRING PARTS



Great for crash damage repairs, these parts come in raw black ABS. Require painting to get a perfect finish.



NEW

Fits 2014 to present Electra Glide, Street Glide and Trike

770860 Inner fairing, black ABS (OEM 57000064)

770861 Outer fairing, gloss black ABS (OEM 57000383)

WINDSHIELD TRIM FOR FXRT STYLE FAIRING



NEW **TOMMY & SONS**

Windshield trim for Tommy & Sons FXRT style fairing has a black finish.

761199 Windshield trim for Tommy & Sons FXRT style fairing

DOMINATOR HEADLIGHT TRIM AND LENS COVER FOR FXLRST FAIRING



NEW **DOMINATOR**

The finishing touch for the Low Rider ST fairing as the trim closes the gap between the head light bezel and the fairing whilst the lens cover improves aerodynamics. Unfortunately, the lens cover is not EU compliant.

770106 Fairing trim and lens cover for 2022 to present FXLRST Low Rider ST and 2022 FXRST El Diablo

FXR POLICE STYLE FAIRING FOR TWIN CAM DYNA AND MILWAUKEE EIGHT SOFTAIL



Styled after the original FXR Police fairing, this fiberglass fairing comes complete with smoke screen, clear headlight lens cover and mounting hardware. Fairing body is unpainted, mounting brackets have a black painted finish. Unfortunately, the lens cover is not EU compliant but no problem to ride without it. Takes standard 7" headlight unit.

NEW

Fits 2006-2017 Dyna with 49mm front fork
770883 FXR Police style fairing, Dyna

Fits 2018-2020 FXLR Low Rider and 2018 to present FXBB & FXBBS Street Bob
770875 FXR Police style fairing, FXLR, FXBB & FXBBS

2015-UP ROAD GLIDE FAIRING PARTS



NEW

Perfect for crash repairs these parts come in black ABS. However, a perfect finish requires painting. It is strongly recommended to test fit before painting.

- 770864** Inner and outer fairing, gloss black ABS (OEM 57000504 & 57000305)
- 770862** Set of left and right speaker housings, black ABS (OEM 57000172 & 57000175)
- 770863** Set of left and right glove boxes, black ABS (OEM 57100107 & 57100109)



770862

770863

770864



BIKERS BOOK 44 & SUPPLEMENT 2024

VIEW AS FLIPBOOK [HTTPS://ZODIAC.NL/CATALOG/](https://zodiac.nl/catalog/)

THE FULL 1496 PAGE THICK CATALOG, SUPER EASY TO NAVIGATE THROUGH!

- FULLY SEARCHABLE
- EXTENSIVE TABLE OF CONTENTS
- PART NUMBERS LINK TO ONLINE CATALOG TO CHECK PRICING AND AVAILABILITY



FAIRING LOWER KIT FOR ROAD GLIDE



NEW

Bolt-on accessory for the frame mounted fairing on 2017 to present Road Glide is made from black ABS and adds leg protection against water and wind plus awesome looks. A perfect finish requires painting. Installation requires a chopped engine guard ZPN 795095 (OEM 49000117).

Fits 2017 to present FLTRX, FLTRXS and FLTRXSE Road Glide

- 795095** Chopped engine guard, black (OEM 49000117)
- 770865** Fairing lower kit (OEM 57001234, 57001042XXX, 57100364, 57100364 & 57200218)

RICK'S SPORTSTER S HEADLIGHT SHROUD



NEW **RICK'S®**
MOTORCYCLES

This headlight shroud enhances the looks and styling and fits straight over the stock headlight. Comes complete with stainless steel brackets that make it easy to bolt on without any fabrication. Hand made from fiberglass and comes in a white gel coat finish, ready for your painters preparation. Fits 2021 to present RH1250 Sportster S.

- 770131** Rick's Sportster S headlight shroud

QUICK RELEASE HANDLEBAR FAIRINGS

NEW



770871



770872



Easy to install aerodynamically shaped handlebar fairing kit gives your bike the popular Café-Racer looks but can be removed in less than a minute. Unfortunately, the lens cover is not EU compliant. Fairing and two detachable mounting kit must be ordered separately. Note that the mounting kits fit front forks that have no covers fitted over the fork tubes between the upper and lower triple trees.

- 770871** Gloss black Quarter fairing with clear window and clear lens cover
- 770872** Gloss black Quarter fairing with smoke window and smoke lens cover

Mounting kit, fits 39mm front forks on 1986-2022 XL Sportster, 1991-2005 Dyna and 1982-2000 FXR and FXRS. Two required for ZPN 770871 or 770872 fairings.

- 770877** Mounting kit for quick release fairing or windscreen, black finish
- 770878** Mounting kit for quick release fairing or windscreen, chrome

Mounting kit, fits 41mm front forks on 1949-1984 Big Twin, 1984-2013 Touring, 1980-1986 FXWG, 1993-2005 Dyna Wide Glide, 1984-2017 Softail, 2009-2013 Trike and 2004 to present Indian Scout.

Two required for ZPN 770871 or 770872 fairings.

- 770879** Mounting kit for quick release fairing or windscreen, black finish
- 770880** Mounting kit for quick release fairing or windscreen, chrome

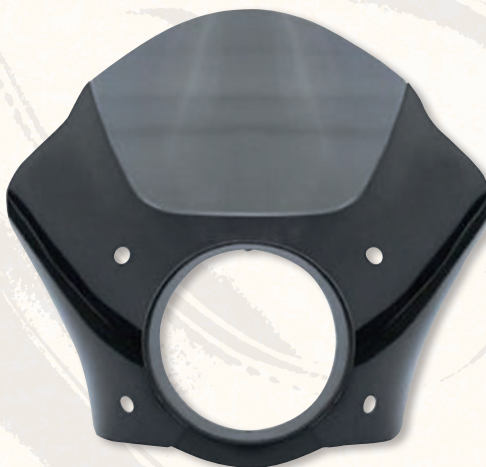
Mounting kit, fits 49mm front forks on 2002-2017 V-Rod, 2006-2017 Dyna, 2008-2011 Rocker, 2013-2017 Breakout, 2018 to present Softail, 2014 to present Touring and 2014 to present Trike.

Two required for ZPN 770871 or 770872 fairings.

- 770881** Mounting kit for quick release fairing or windscreen, black finish
- 770882** Mounting kit for quick release fairing or windscreen, chrome

GAUNTLET STYLE HANDLEBAR FAIRINGS

NEW



Easy to install aerodynamically shaped handlebar fairing kit gives your bike the popular club style looks but can be removed in less than a minute. ABS fairing body has Vivid Black finish and smoke screen, mounting kit included.

Fits 39mm front forks on 1986-2022 XL Sportster and 1991-2005 Dyna

- 770874** Vivid black Gauntlet style handlebar fairing

Fits 49mm front forks on 2006-2017 Dyna

- 770873** Vivid black Gauntlet style handlebar fairing

STRETCHED 1993-2013 STYLE TOURING HARD BAGS



NEW

In fact copies from the stock saddlebags as on 1993-2013 Electra Glide, Road Glide, Street Glide and some Road King in ABS material but in 4" stretched at the underside. Bags come with a Vivid Black painted finish.

770851 Set of left and right saddlebag bodies with lids, latches and face plates, Vivid Black

STRETCHED 2014 TO PRESENT STYLE TOURING HARD BAGS



NEW

In fact copies from the stock saddlebags as on 2014 and later Electra Glide, Road Glide, Street Glide and some Road King in ABS material but in 4" stretched at the underside. Bags come with a Vivid Black painted finish.

770855 Set of left and right saddlebag bodies with lids, latches and face plates, Vivid Black

1993-2013 STYLE STANDARD TOURING HARD BAGS



NEW

Perfect copies from the stock saddlebags as on 1993-2013 Electra Glide, Road Glide, Street Glide and some Road King in ABS material with a Vivid Black painted finish.

770850 Set of left and right saddlebag bodies with lids, latches and face plates, Vivid Black (OEM 90752-93, 90753-93, 90756-93 & 90757-93)

770852 Saddlebag lids, set of left and right, Vivid Black (OEM 90756-93 & 90757-93)

2014 TO PRESENT STYLE STANDARD TOURING HARD BAGS



NEW

Perfect copies from the stock saddlebags as on 2014 and later Electra Glide, Road Glide, Street Glide and some Road King in ABS material with a Vivid Black painted finish.

770854 Set of left and right saddlebag bodies with lids, latches and face plates, Vivid Black (OEM 90200411, 90200412, 90200413 & 90200414)

770856 Saddlebag lids, set of left and right, Vivid Black (OEM 90200411 & 90200413)

CIRO LIGHTED SADDLEBAG EXTENSIONS



Give your bike that smooth, lower, custom look with Ciro Saddlebag Extensions. Built by real riders, these saddlebag extensions were designed for standard Harley hard bags with flat bottoms. Lean angle clearance remains unchanged so you don't need to make any compromises in the corners. Manufactured from the same ABS material as your original equipment bags; these extensions are tough and built to last. Increased visibility and style with red LED lights on the sides and back to make sure you're seen from all angles. Works as running-, turn-, and brake lights on US Domestic models, and turn & tail light on HDI International Export models. The run/turn/brake function on HDI International Export models can be activated with the separately available Elektronik Trick Box ZPN 749510. Unfortunately, the lighting is not EU compliant.

754346 **NEW** Chrome, fits 2014 to present Electra Glide, Street Glide, Road Glide, Road King and FLTRUSE Screamin' Eagle CVO Road Glide Ultra. Does not fit other CVO or Screamin' Eagle

754345 **NEW** Black, fits 2014 to present Electra Glide, Street Glide, Road Glide, Road King and FLTRUSE Screamin' Eagle CVO Road Glide Ultra. Does not fit other CVO or Screamin' Eagle

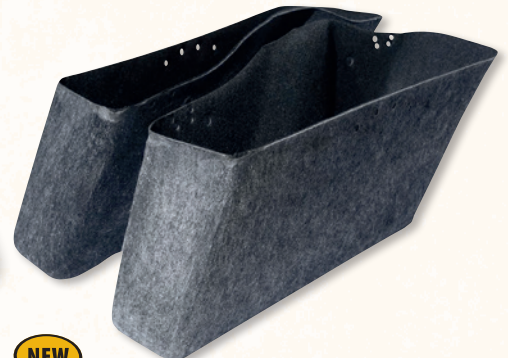
754200 Black, fits 1997-2013 FLHT Electra Glide and 2006-2009 FLHX Street Glide

754202 Black, fits 2010-2013 Street Glide and Road Glide

754309 **NEW** Install kit for ZPN 754200 on 2010-2013 Street Glide, Street Glide Special, Road Glide Special and Road Glide Custom

749510 Elektronik Trick Box to activate run/turn/brake function on HDI International Export

SADDLEBAG LINERS FOR STANDARD HARD BAGS



NEW

Soft touch liners fit exactly in stock style hard bags to protect your stuff and reduce rattles and noises. Sold in sets of two for left and right standard Touring style hard bags.

770853 Saddlebag liner kit, fits 1993-2013 standard Touring style hard bags (OEM 92189-06)

770857 Saddlebag liner kit, fits 2014 to present standard Touring style hard bags (OEM 90200918)

OIL DRAIN JERRYCAN



NEW



Plastic jerry can with build-in drain pan is indispensable for a clean oil change. Holds 2.5 US Gallons (almost 9.5 liter) of waste oil. Measures 21"x12"x4 3/8" (53x30x11cm).

734923 Oil drain jerry can

BIG TWIN 4 SPEED MAINSHAFT KICKSTARTER CLUTCH GEAR PULLER



This tool was designed specifically to remove the starter clutch ratchet gear without damage to the gear or shaft. Used on all kick starter equipped 4 Speed Big Twin 1936-1986. Easy to use and will not slip off the gear.

233176 Clutch gear puller, Jims USA (OEM 95650-42)

789278 **NEW** Clutch gear puller, V-Twin Mfg. (OEM 95650-42)

ZODIAC GOLDRAKE MOTORCYCLE WORKSHOP LIFT BY LV8



770907 Quickmount/dismount kit for ZPN 770903 on Goldrake Workshop lift



770908 Hand held battery operated up-and-down remote control unit with receiver unit



Designed and made in Europe professional electro-hydraulically operated motorcycle lift for use with Heavy-Weight motorcycles. Comes complete with electro-hydraulic unit with hand control unit, retractable gate, ramp, front safety bar, left and right tool holders and safety device to block the platform. Various accessories are available to completely adapt the lift exactly to your needs. Lift and accessories are drop shipped at cost to your address.

- Capacity: 800kg
- Single-phase: 220-240 Volt
- Minimum height: 18cm
- Maximum height: 130cm
- Platform width: 75cm
- Platform length: 220cm
- Ramp width: 45cm
- Ramp length: 57.5cm
- CE and TÜV approved

770900 Zodiac Goldrake Workshop Lift



770902 Mechanical operated wheel clamp



770906 Quickmount/dismount kit for ZPN 770902 or 770904 on Goldrake Workshop lift



770909 Up-and-down foot control



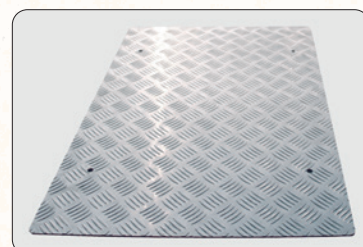
770910 Set of left and right tie-down eyelet side rails, 220cm



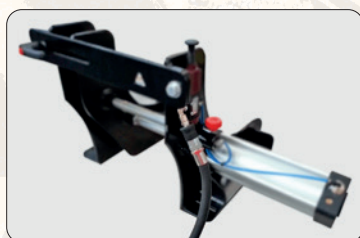
770904 Pneumatic wheel clamp



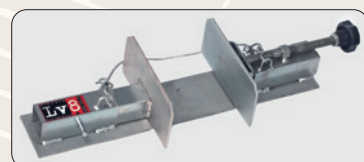
770903 Automatic ride-in style wheel clamp (also great for in a van or trailer)



770911 Skid plate, aluminum, 54x34cm



770905 Air hose connection kit for ZPN 770904



Accessories

770901 Manual operated wheel clamp

770912 Set of left and right 27.5x132cm side extensions with 24.4x70cm retractable ramps for trikes

770913 Retractable front platform extension 75x35cm for extremely long bikes